

Lube Ranger Components

306345W

EN



Important Safety Instructions

Read all warnings and instructions in this manual and in the component instruction manuals included with your equipment. Save all instructions.

WARNING



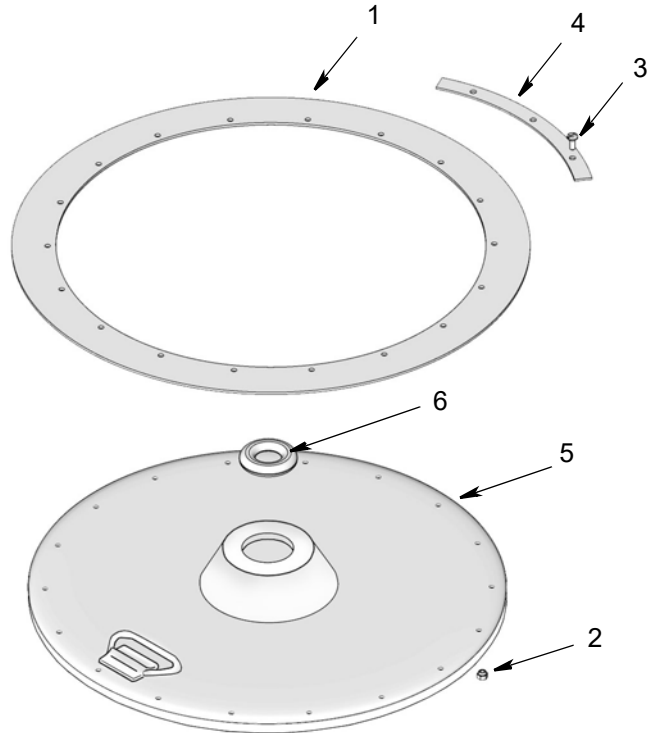
To reduce the risk of serious bodily injury, including splashing of fluid in the eyes or on the skin and injury from moving parts, **ALWAYS** follow the **pressure relief procedure** in the separate pump manual provided with your equipment, before you install any of these components and before you remove components when you change drums.

Parts Drawings and Parts Lists

Model 223845 Follow Plate

For 400-lb drum size 50:1 and 15:1 Fire-Ball® pumps

Ref	Part	Description	Qty
1	186463	WIPER	1
2	102040	NUT, lock; 1/4 in.-20	18
3	100377	SCREW, mach, pnh; 1/4 in-20 x 5/8 in.	18
4	161288	RETAINER, barrel	6
5	224025	PLATE, follow	1
6	186104	GROMMET, follow plate	1



Model 223846 Follow Plate

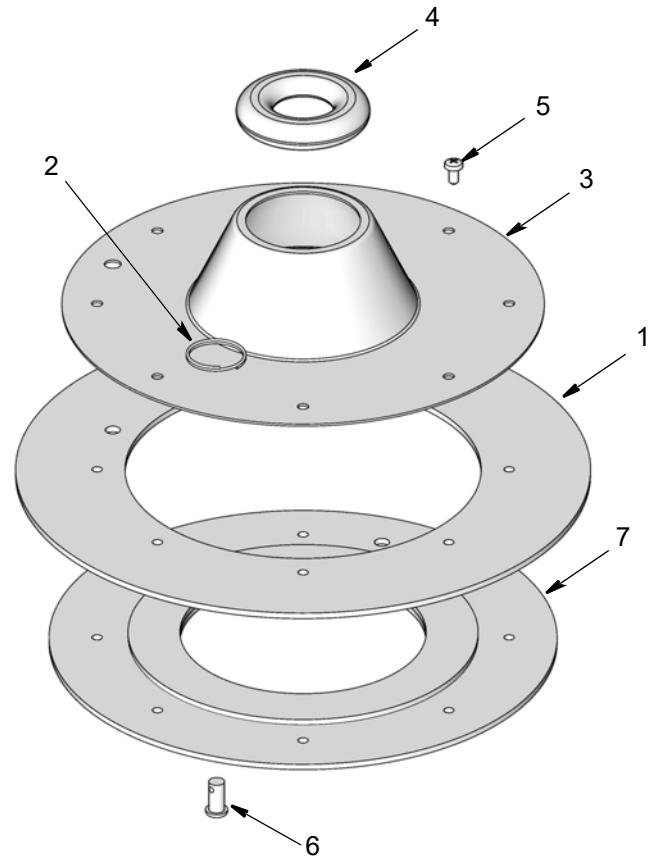
For 400-lb drum size 50:1 President® pump

Ref	Part	Description	Qty
1	186463	WIPER	1
2	102040	NUT, lock; 1/4 in.-20	18
3	100377	SCREW, mach, pnh; 1/4 in-20 x 5/8 in.	18
4	161288	RETAINER, barrel	6
5	224025	PLATE, follow	1
6	158339	GROMMET, follow plate	1

Model 220653 Follow Plate

For 35-lb pail size 50:1 Fire-Ball® pump

Ref	Part	Description	Qty
1	183241	WIPER	1
2	183245	SPRING, retaining	1
3	183242	PLATE, follow	1
4	186104	GROMMET, follow plate	1
5	103833	SCREW, machine, bnd-hd; 10-32 x 0.375 in. long	8
6	108714	PIN, clevis	1
7	220651	PLATE, wiper	1



Model 220654 Follow Plate

For 120-lb drum size 50:1 and 15:1 Fire-ball® pumps

Ref	Part	Description	Qty
1	183243	WIPER	1
2	183245	SPRING, retaining	1
3	185968	PLATE, follow	1
4	186104	GROMMET, follow plate	1
5	103833	SCREW, machine; bnd-hd; 10-32 x 0.375 in long	8
6	108714	PIN, clevis	1
7	220652	PLATE, wiper	1

Model 223344 Follow Plate

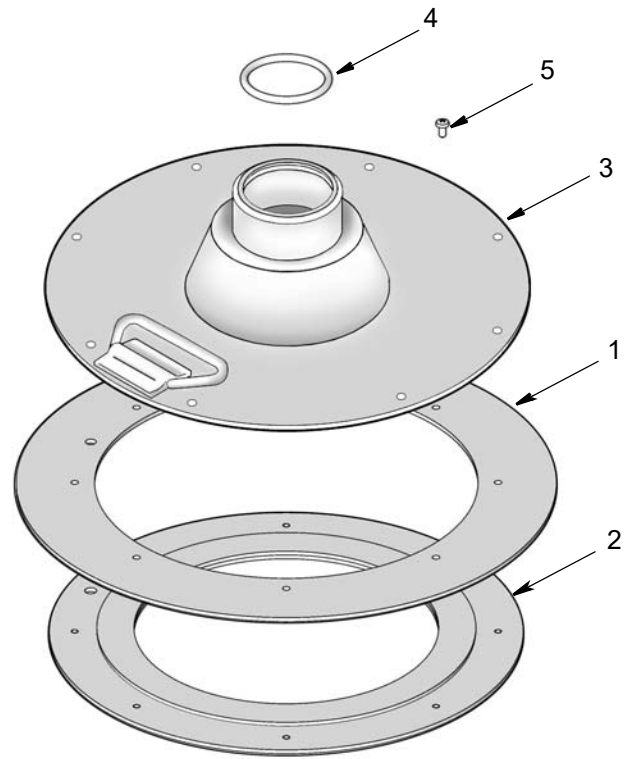
For 120-lb drum size 50:1 President® pump

Ref	Part	Description	Qty
1	183243	WIPER	1
2	183245	SPRING, retaining	1
3	185968	PLATE, follow	1
4	158339	GROMMET, follow plate	1
5	103833	SCREW, machine; bnd-hd; 10-32 x 0.375 in long	8
6	108714	PIN, clevis	1
7	220652	PLATE, wiper	1

Model 223700 Follow Plate

For 120-lb drum size 5:1 Dyna-Star® pump

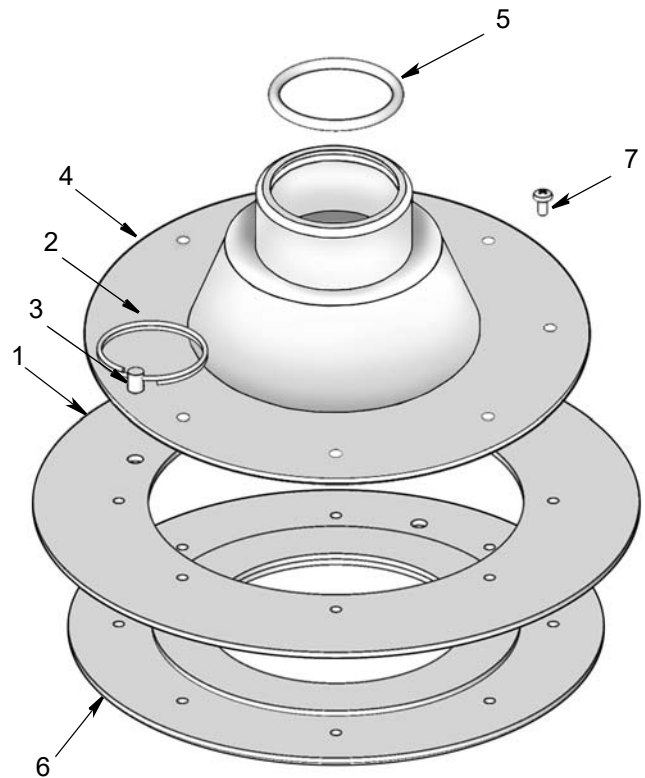
Ref	Part	Description	Qty
1	183243	WIPER	1
2	220652	PLATE, wiper	1
3	223831	PLATE, follow	1
4	159846	O-RING, nitrile rubber	1
5	103833	SCREW, machine; bnd-hd; 10-32 x 0.375 in long	8



Model 224916 Follow Plate

For 35-lb drum size 5:1 Dyna-Star® pump

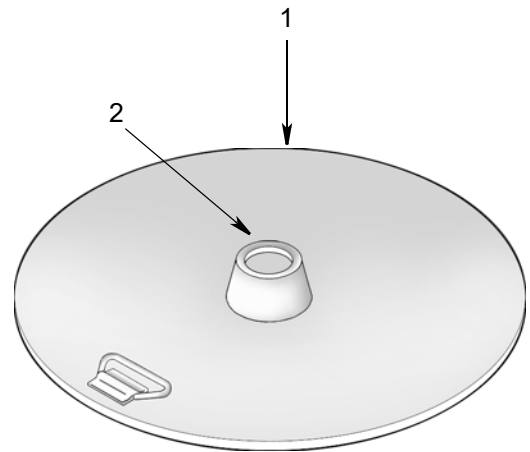
Ref	Part	Description	Qty
1	183241	WIPER	1
2	183245	SPRING, retaining	1
3	108714	PIN, clevis	1
4	224917	PLATE, follow	1
5	159846	O-RING, nitrile rubber	1
6	220651	PLATE, wiper	1
7	103833	SCREW, machine; bnd-hd; 10-32 x 0.375 in long	8



Model 204130 Follow Plate

For 400-lb drum size 50:1 and 15:1 Fire-Ball® pumps

Ref	Part	Description	Qty
1	160848	GROMMET, follow plate; for 1.25 in (31.8 mm) tube	1
2	204129	FOLLOW PLATE, bare	1



Model 205337 Follow Plate

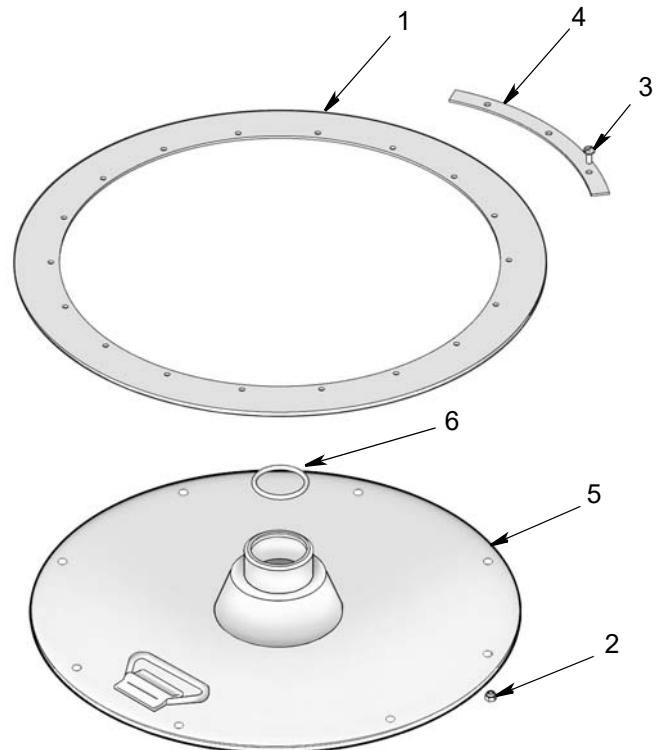
For 400-lb drum size 50:1 President® pump

Ref	Part	Description	Qty
1	158339	GROMMET, follow plate; for 1.625 in. (41.3 mm) tube	1
2	205338	FOLLOW PLATE, bare	1

Model 223701 Follow Plate

For 400-lb drum size 5:1 Dyna-Star® pump

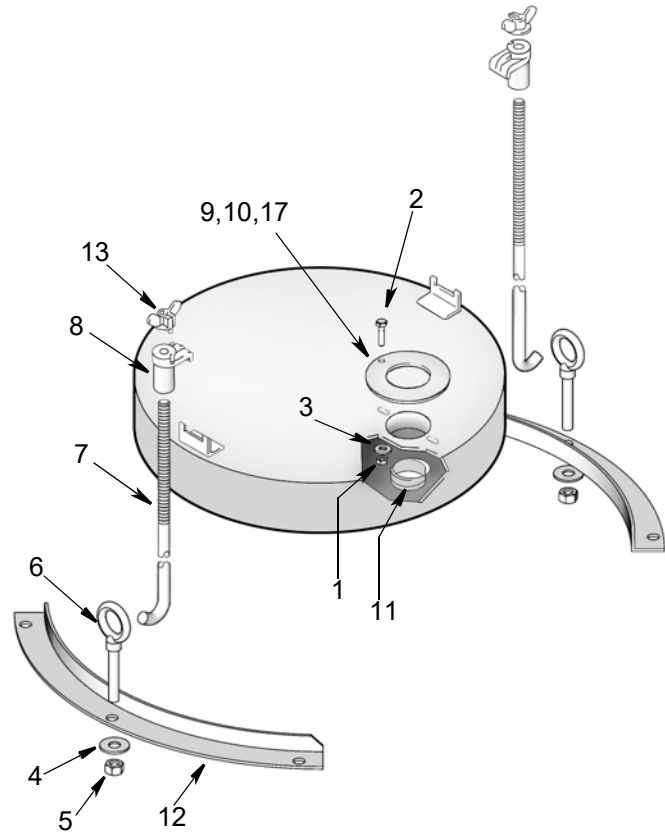
Ref	Part	Description	Qty
1	186463	WIPER	1
2	102040	NUT, lock; 1/4 in.-20	18
3	100377	SCREW, machine pnh; 1/4 in.-20 UNC-2A x 5/8 in.	18
4	161288	RETAINER, barrel	6
5	223832	PLATE, follow	8
6	159846	O-RING, nitrile rubber	1



Model 206586 Bung Drum Cover and Hold Down Rods

For 400-lb drum size 5:1 Fire-Ball® pump and 10:1 President® pump

Ref	Part	Description	Qty
1	100015	NUT, hex; 1/4 in.-20 (not shown)	2
2	100021	SCREW, hex hd cap; 1/4 in.-20 x 1 in. (not shown)	1
3	100527	WASHER, wrought steel, 1/4 in.	2
4	100696	WASHER, wrought steel, 7-16 in.	2
5	101213	NUT, hex; 7/16 in.-14	2
6	102280	BOLT, special eye; 7/16 in-14	2
7	153058	ROD, hold down; 400-lb drum length	2
8	153166	BRACKET, cover hold down	1
9	161023	GASKET; cellulose fiber (Fire-Ball pump only)	1
10	161096	GASKET; cellulose fiber (President pump only)	1
11	166437	GROMMET; rubber, 2 in. npt bung	1
12	166438	LOCATER, drum	2
13	200889	WING NUT assembly	2
14	206643	DRUM COVER, bare	1
15	207361	TIE ROD KIT (includes 4 - 8, 12 and 13)	1
16	207367	COVER assembly (includes 1-3, 9-11, 14 and 17)	1
17	192658	GASKET, cellulose fiber (for President pump only)	1

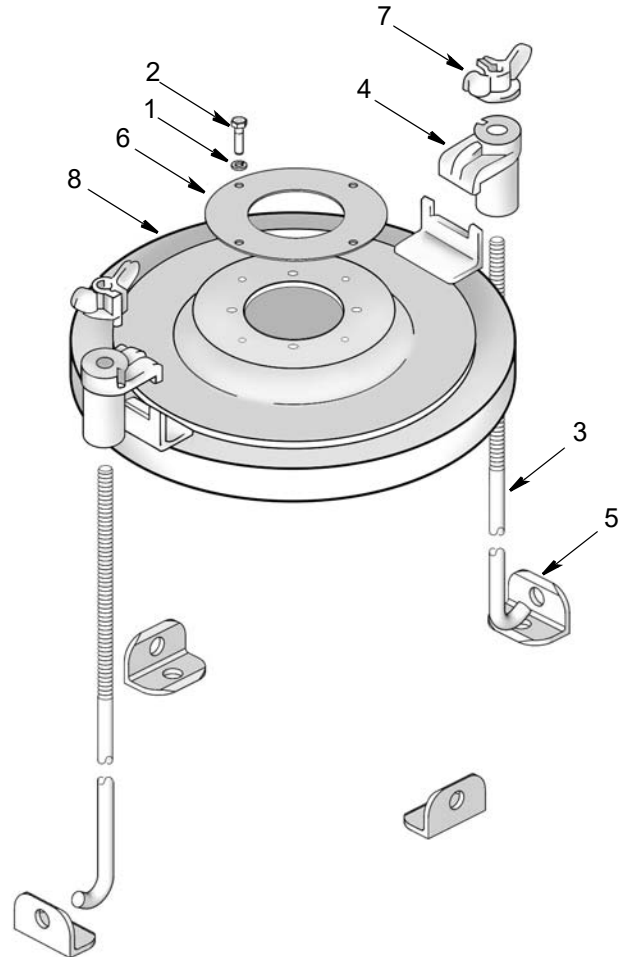


Model 204269

Open Drum Cover and Hold Down Rods

For 120-lb drum size and 50:1 and 15:1 Fire-Ball® pumps

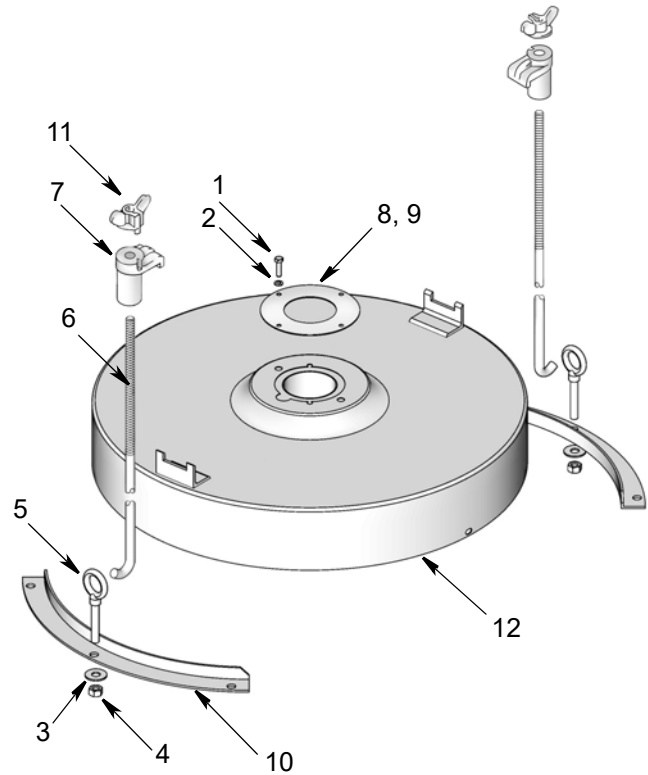
Ref	Part	Description	Qty
1	100016	LOCKWASHER, spring, 1/4 in.	2
2	100021	SCREW, hex hd, cap; 1/4 in.-20 x 1 in. (not shown)	2
3	153102	ROD, hold down	2
4	153166	BRACKET, cover, hold down	2
5	159016	ANCHOR, base	4
6	161023	GASKET, cellulose fiber (for Fire-Ball pump only)	1
7	200889	WING NUT assbly	2
8	204193	DRUM COVER, bare	1
9	222061	HOLD DOWN Kit (includes 3-5 and 7)	1
10	222060	COVER assembly (includes 1, 2, 6 and 8)	1



Model 204273 Open Drum Cover and Hold Down Rods

For 400-lb drum size and 5:1 Fire-Ball® pump and 10:1 President® pump

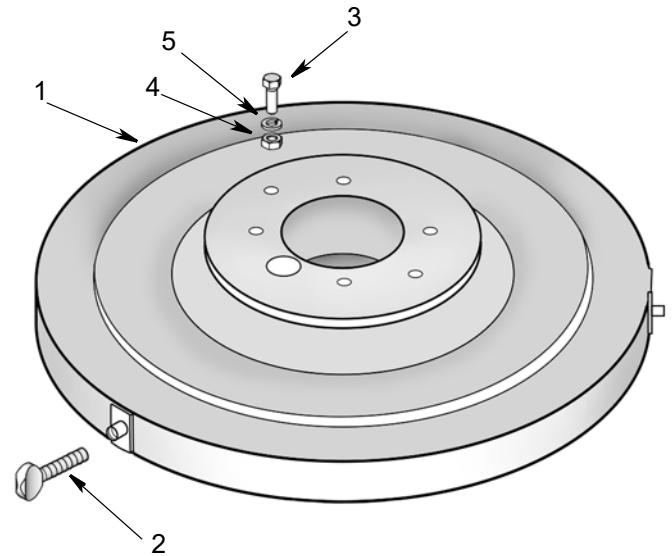
Ref	Part	Description	Qty
1	100016	LOCKWASHER, spring, 1/4 in.	2
2	100021	SCREW, hex hd, cap; 1/4 in.-20 x 1 in. (not shown)	2
3	100696	WASHER, wrought steel; 7/16 in.	2
4	100213	NUT, hex; 7/16 in.-14	2
5	102280	BOLT, special eye; 7/16 in.-14	2
6	153058	ROD, hold down; 400-lb drum length	2
7	153166	BRACKET; cover hold down	2
8	161023	GASKET, cellulose fiber (for Fire-Ball pump only)	1
9	161096	GASKET, cellulose fiber (for President pump only)	1
10	166438	LOCATER, drum	2
11	200889	WING NUT assbly	2
12	206636	DRUM COVER, bare	1
13	207361	TIE ROD KIT (includes 3-7, 10 and 11)	1
14	207366	COVER Assbly (includes 1, 2, 8, 9 and 12)	1



Model 204574 Drum Cover

For 120-lb drum size and 50:1, 15-1, and 5-1 Fire-Ball® pumps and 10:1 and 50-1 President® pumps and 1:1 and 5:1 Dyna-Star® pumps

Ref	Part	Description	Qty
1	191746	DRUM COVER, painted	1
2	101518	THUMBSCREW; 5/16 in.-18 x 1.5 in. long	3
3	100022	SCREW, pump mounting; hex hd cap; 1/4 in.-20 x 3/4 in.	2
4	100015	NUT, hex; 1/4 in.-20	2
5	100016	LOCKWASHER, spring, 1/4 in.	2

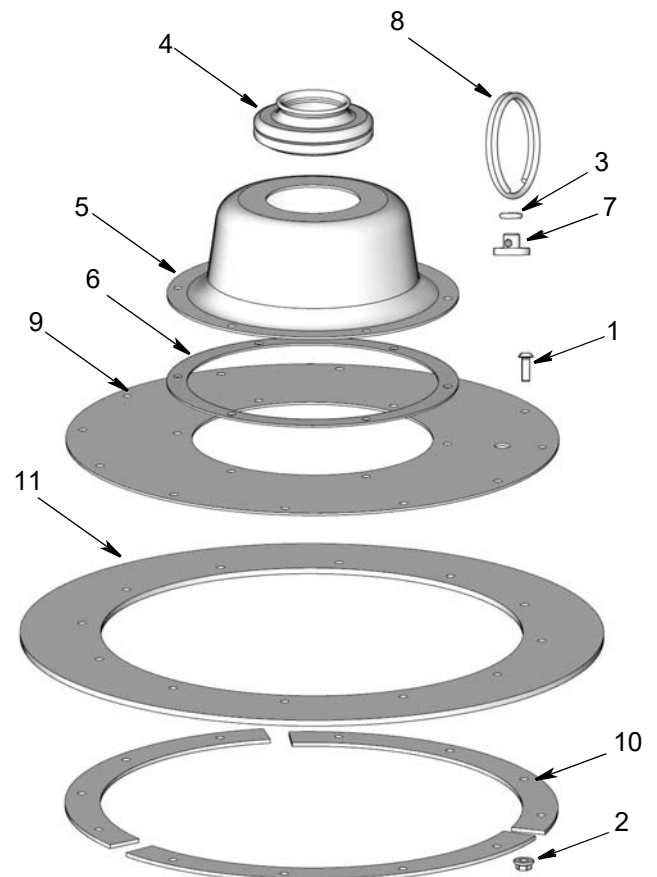


Model 24F901 Follow Plate

For 35-lb, 50:1 Fire-Ball® pump

Ref	Part	Description	Qty
1	-----	SCREW, hex, socket, M4 x 12	18
2	-----	NUT, lock, M4	18
3	-----	O-RING	1
4†	278308	GROMMET, follow plate	1
5	-----	FLANGE, follow plate	1
6	-----	GASKET, follow plate	1
7	-----	PIN, clevis	1
8	-----	SPRING, retaining	1
9	-----	PLATE, follow, 35-lb	1
10	-----	RETAINER, barrel, 35-lb	3
11†	16F769	WIPER, follow plate, 35-lb	1

† Included in repair kit 25A183



Model 24F902 Follow Plate

For 120-lb, 50:1 Fire-Ball® pump

Ref	Part	Description	Qty
1	-----	SCREW, hex, socket, M4 x 12	24
2	-----	NUT, lock, M4	24
3	-----	O-RING	1
4◆	278308	GROMMET, follow plate	1
5	-----	FLANGE, follow plate	1
6	-----	GASKET, follow plate	1
7	-----	PIN, clevis	1
8	-----	SPRING, retaining	1
9	-----	PLATE, follow, 120-lb	1
10	-----	RETAINER, barrel, 120-lb (3 shown)	6
11◆	16F781	WIPER, follow plate, 120-lb	1

◆ Included in repair kit 25A184

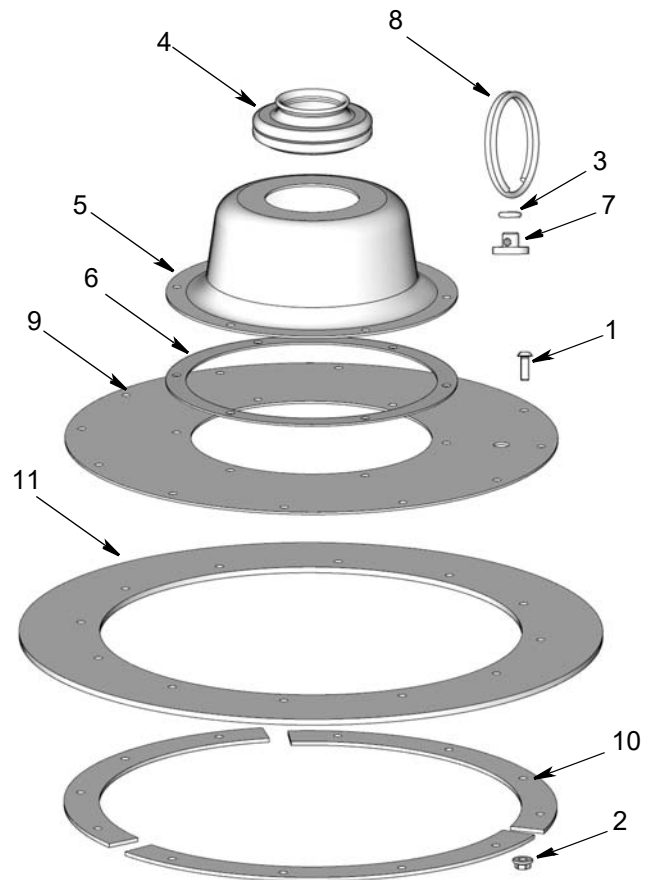
Model 24F903 Follow Plate

For 400-lb, 50:1 Fire-Ball® pump

Ref	Part	Description	Qty
1	-----	SCREW, hex, socket, M4 x 12	24
2	-----	NUT, lock, M4	24
3	-----	O-RING	1
4❖	278308	GROMMET, follow plate	1
5	-----	FLANGE, follow plate	1
6	-----	GASKET, follow plate	1
7	-----	PIN, clevis	1 </tr

Ref	Part	Description	Qty
8	-----	SPRING, retaining	1
9	-----	PLATE, follow, 400-lb	1
10	-----	RETAINER, barrel, 400-lb (3 shown)	6
11❖	16F784	WIPER, follow plate, 400-lb	1

❖ Included in repair kit 25A185



All written and visual data contained in this document reflects the latest product information available at the time of publication. Graco reserves the right to make changes at any time without notice.

Original instructions. This manual contains English. MM 306345
For patents see: www.graco.com/patents

Graco Headquarters: Minneapolis
International Offices: Belgium, China, Japan, Korea

GRACO INC. AND SUBSIDIARIES • P.O. BOX 1441 • MINNEAPOLIS MN 55440-1441 • USA

Copyright 1952, Graco Inc. All Graco manufacturing locations are registered to ISO 9001.

www.graco.com
Revised December 2020