

Instructions–Parts List



LOW PRESSURE, MEDIUM VOLUME “red alert” Filters

307282G

Filters fluids and indicates when filter requires cleaning.

300 psi (21 bar) Maximum Working Pressure

6 gpm (22 liter/min) Flow Capacity

36 sq. in. (230 cm²) Filtering Area

Model No. 213057, 30 mesh (590 micron) element

Model No. 213058, 60 mesh (250 micron) element

Model No. 213059, 100 mesh (149 micron) element

Model No. 213060, 150 mesh (95 micron) element

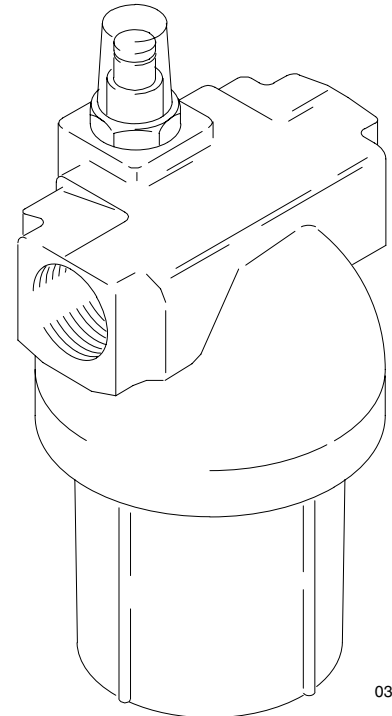
Model No. 213061, 200 mesh (74 micron) element

Model No. 214001, without element



Important Safety Instructions

Read all warnings and instructions in this manual.
Save these instructions.



03708

Installation

To clean or service the filter without shutting down the system, install a dual filter or a filter bypass system as explained below.

The numbers and letters in parentheses refer to Figs. 1, 2, and 3 and the Parts Drawing. **Accessories** and **Technical Data** are on the front page.

NOTE: Allow 3 in. (76 mm) minimum clearance below the filter for easy removal of the bowl (9).

Fluid Drain Valve (required in all systems)

⚠ WARNING

A fluid drain valve is required in the base of each fluid filter. Use this drain valve to relieve fluid pressure in the filter, to reduce the risk of serious injury, including fluid injection and splashing in the eyes or on the skin.

Remove the 1/4 npt plug from the bottom of the filter and install an adapter and drain valve (A,B). See Fig. 1.

Dual Filter System

This setup enables you to redirect the fluid to another filter while one filter is cleaned or serviced.

Install two filters as shown in Fig. 1. Install four suitable shutoff valves (D), one at each filter and outlet, to redirect the fluid and isolate the filter not in use.

Filter Bypass System

This setup enables you to redirect the fluid through pipes which bypass the filter while cleaning or servicing the filter.

Install the filter and bypass pipes as shown in Fig. 2. Install four suitable shutoff valves (D), one each at the filter inlet, the filter outlet, the bypass pipe inlet, and the bypass pipe outlet. These valves redirect the fluid and isolate the filter while cleaning and servicing.

⚠ WARNING

To reduce the risk of component rupture and serious bodily injury, **do not** exceed **300 psi (21 bar) Maximum Working Pressure**, or the maximum working pressure of the lowest rated component or accessory in your system.

Be sure all components and accessories are rated to withstand the maximum working pressure of your pump.

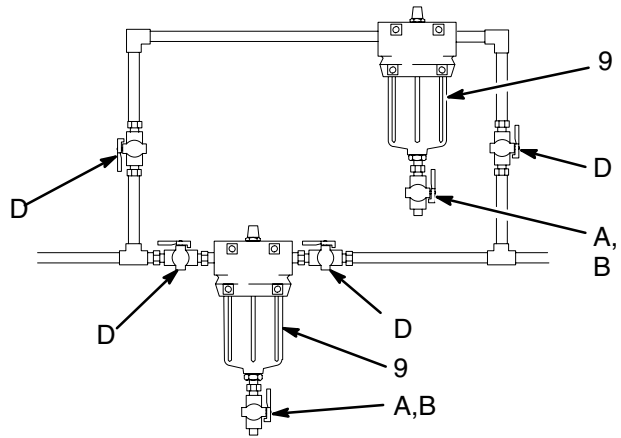


Fig. 1

03709

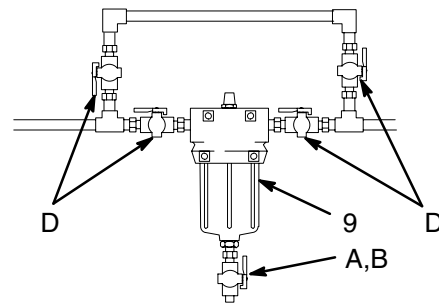


Fig. 2

03710

Service

⚠ CAUTION

If the filter will not be used for a while, thoroughly clean all the parts in solvent and blow them dry before the paint dries and clogs the filter. To help prevent damaging the parts, do not clean them with a wire brush or sharp object.

Indicator

The indicator provides gradual warning of a dirty element. When the indicator shows 3/4 red, clean the element. If not cleaned promptly, the filter bypass valve opens and fluid will not be filtered.

Replace the indicator assembly (1) if the indicator is not working correctly (it is always red or never red). See Fig. 3.

To convert to a CV75 o-ring for special applications/ fluid compatibility, unscrew the indicator (1), remove the existing o-ring (1a), and replace with 551981 o-ring (must be ordered separately).

Bypass Valve

The valve opens when a dirty element causes the filter's outlet pressure to drop 15 psi (1 bar) below the inlet pressure. This keeps the system pressure steady and prevents the element from collapsing.

Replace the bypass valve (2) if it is damaged or worn.

Valve O-Ring

The o-ring seals the bowl (9) to the housing (3). If material leaks around the bowl, replace the o-ring (6).

Remove the bowl and o-ring. Clean the parts in a compatible solvent. Be careful not to damage the o-ring or sealing surfaces of the bowl and housing. Before assembling, lubricate the parts with No. 2 grease.

Bowl, Element and Spring

To reduce downtime, keep a spare bowl (9), element (7) and spring (8) on hand. Before removing the bowl, direct the fluid through the bypass pipes or shut down the system. Relieve fluid pressure by opening the drain valve (B).

Holding the bowl with a wrench to keep it from turning, screw the drain plug (10) out. After the fluid has drained out, remove the bowl, element and spring. Replace immediately with the spare bowl, element and spring to keep the paint from drying on the housing (3) and other parts. Install the element with the dome end up. Lubricate the threads of the bowl before screwing it into the housing. Tighten it securely.

Clean the bowl, element and spring you removed with a compatible solvent before the paint dries. Do not use a wire brush or sharp object to clean. Store until needed.

NOTE: Clean the filter element (7) with a small paint brush. Blow out lodged particles with air, and inspect for damage. Replace if ruptured.

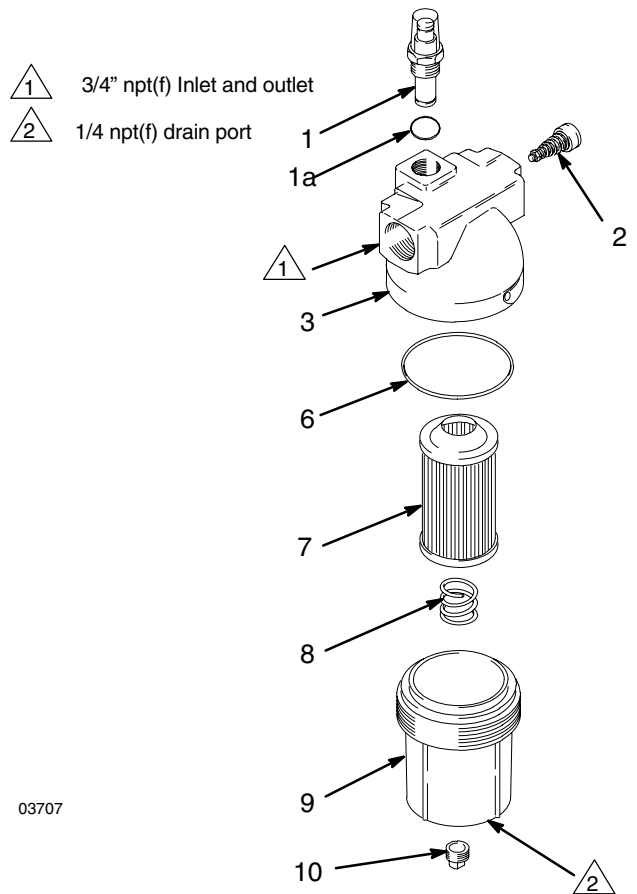


Fig. 3

Parts

Model No. 213057 to 213061

Includes items 1 to 10.

Model No. 214001

Includes items 1 to 6, 8 to 10;

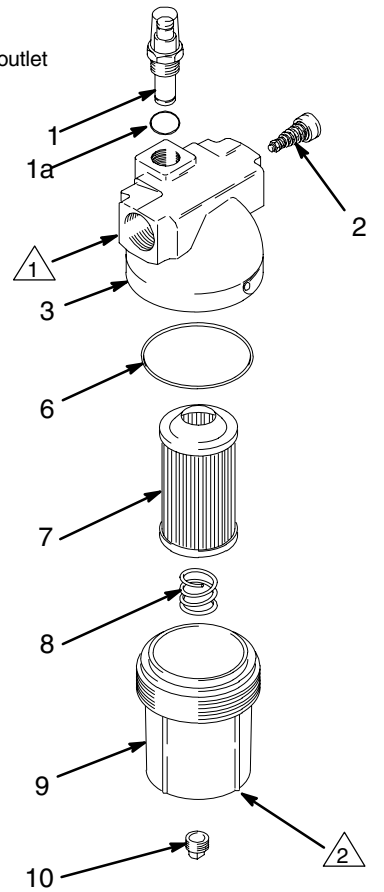
Order the filter element separately from those listed under Ref. No. 7.

Ref.

No.	Part No.	Description	Qty.
1	104125	INDICATOR, filter (includes 1a)	1
1a		O-RING, fluoroelastomer <i>See Accessories for CV75 o-ring</i>	1
2	104440	VALVE, bypass	1
3✓	172699	HOUSING, filter	1
6✓	103209	O-RING, fluoroelastomer <i>See Accessories for PTFE o-ring</i>	1
7✓	108106	ELEMENT, filter, 30 mesh (590 micron) <i>(for Model 213057 only)</i>	1
	108107	ELEMENT, filter, 60 mesh (250 micron) <i>(for Model 213058 only)</i>	1
	108108	ELEMENT, filter, 100 mesh (149 micron) <i>(for Model 213059 only)</i>	1
	108109	ELEMENT, filter, 150 mesh (95 micron) <i>(for Model 213060 only)</i>	1
	108110	ELEMENT, filter, 200 mesh (74 micron) <i>(for Model 213061 only)</i>	1
8✓	102859	SPRING, element	1
9✓	172725	BOWL, filter	1
10	100509	PLUG, pipe; 1/4 npt	1

✓ *Keep these spare parts on hand to reduce downtime.*

- △ 1 3/4" npt(f) Inlet and outlet
- △ 2 1/4 npt(f) drain port



Accessories

CV75 Indicator O-Ring 116768

For use with materials not compatible with the standard fluoroelastomer indicator o-ring

PTFE Housing O-Ring 102857

For use with materials not compatible with the standard fluoroelastomer o-ring

Drain Valve 208392

500 psi (34) Maximum Working Pressure

1/4 npt(m) x 3/8 npt(f). PTFE seal.

For relieving fluid pressure in the filter.

Technical Data

Maximum Working Pressure 300 psi (22 bar)

Flow Capacity 6 gpm (22 liters/min)

Filter Area 36 sq. in. (232 cm²)

Wetted Parts Anodized Aluminum,[®];
300 Series Stainless Steel,
PTFE, Plated Steel

Dimensions 4" (100 mm) width

3.75" (95 mm) depth

8.75" (220 mm) height

Weight 3 lb (1.4 kg)

The Graco Standard Warranty

Graco warrants all equipment manufactured by Graco and bearing its name to be free from defects in material and workmanship on the date of sale to the original purchaser for use. With the exception of any special, extended, or limited warranty published by Graco, Graco will, for a period of twelve months from the date of sale, repair or replace any part of the equipment determined by Graco to be defective. This warranty applies only when the equipment is installed, operated and maintained in accordance with Graco's written recommendations.

This warranty does not cover, and Graco shall not be liable for general wear and tear, or any malfunction, damage or wear caused by faulty installation, misapplication, abrasion, corrosion, inadequate or improper maintenance, negligence, accident, tampering, or substitution of non-Graco component parts. Nor shall Graco be liable for malfunction, damage or wear caused by the incompatibility of Graco equipment with structures, accessories, equipment or materials not supplied by Graco, or the improper design, manufacture, installation, operation or maintenance of structures, accessories, equipment or materials not supplied by Graco.

This warranty is conditioned upon the prepaid return of the equipment claimed to be defective to an authorized Graco distributor for verification of the claimed defect. If the claimed defect is verified, Graco will repair or replace free of charge any defective parts. The equipment will be returned to the original purchaser transportation prepaid. If inspection of the equipment does not disclose any defect in material or workmanship, repairs will be made at a reasonable charge, which charges may include the costs of parts, labor, and transportation.

THIS WARRANTY IS EXCLUSIVE, AND IS IN LIEU OF ANY OTHER WARRANTIES, EXPRESS OR IMPLIED, INCLUDING BUT NOT LIMITED TO WARRANTY OF MERCHANTABILITY OR WARRANTY OF FITNESS FOR A PARTICULAR PURPOSE.

Graco's sole obligation and buyer's sole remedy for any breach of warranty shall be as set forth above. The buyer agrees that no other remedy (including, but not limited to, incidental or consequential damages for lost profits, lost sales, injury to person or property, or any other incidental or consequential loss) shall be available. Any action for breach of warranty must be brought within two (2) years of the date of sale.

Graco makes no warranty, and disclaims all implied warranties of merchantability and fitness for a particular purpose in connection with accessories, equipment, materials or components sold but not manufactured by Graco. These items sold, but not manufactured by Graco (such as electric motors, switches, hose, etc.), are subject to the warranty, if any, of their manufacturer. Graco will provide purchaser with reasonable assistance in making any claim for breach of these warranties.

In no event will Graco be liable for indirect, incidental, special or consequential damages resulting from Graco supplying equipment hereunder, or the furnishing, performance, or use of any products or other goods sold hereto, whether due to a breach of contract, breach of warranty, the negligence of Graco, or otherwise.

FOR GRACO CANADA CUSTOMERS

The parties acknowledge that they have required that the present document, as well as all documents, notices and legal proceedings entered into, given or instituted pursuant hereto or relating directly or indirectly hereto, be drawn up in English. Les parties reconnaissent avoir convenu que la rédaction du présente document sera en Anglais, ainsi que tous documents, avis et procédures judiciaires exécutés, donnés ou intentés à la suite de ou en rapport, directement ou indirectement, avec les procédures concernées.

Graco Phone Number

TO PLACE AN ORDER, contact your Graco distributor, or call one of the following numbers to identify the distributor closest to you:

1-800-328-0211 Toll Free

612-623-6921

612-378-3505 Fax

*All written and visual data contained in this document reflects the latest product information available at the time of publication.
Graco reserves the right to make changes at any time without notice.*

This manual contains English. MM 307282

Graco Headquarters: Minneapolis

International Offices: Belgium, China, Japan, Korea

GRACO INC. P.O. BOX 1441 MINNEAPOLIS, MN 55440-1441

Copyright 1977, Graco Inc. is registered to ISO 9001

www.graco.com

Revised 2/2009