

# Universal Hand Pump

312758D  
EN

**- For transferring grease to Grease Jockey and G3 Systems -**

## Part No. 247886

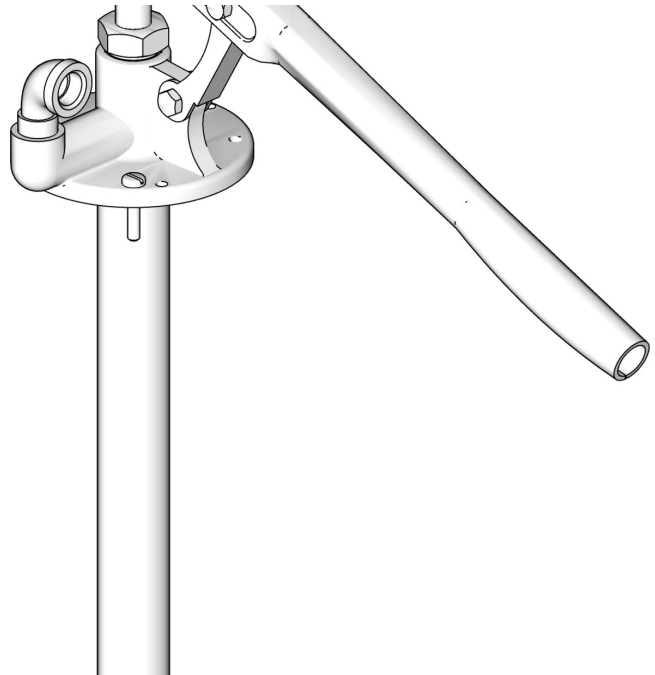
Hand Operated - 35# Pump

*600 psi (4.13 MPa, 41.3 bar) Maximum Working Pressure  
85 ml of output per complete double acting stroke*



### Important Safety Instructions

Read all warnings and instructions in this manual. Save these instructions.



TI11469



# Pump System Setup

(Refer to FIG. 2 for all installation instructions on this page.)

## Cover Assembly Setup

Cover Assembly Includes: Pump (100), Follow Plate (400), Hose (500) and Cover (201).

After the components are assembled, it is not necessary to repeat this Cover Assembly Setup procedure except after servicing or replacing any cover assembly parts or following a thorough system cleaning.

1. Insert riser tube (115) into opening in top of cover (200a).
2. Install follow plate (400) on riser tube (115).
3. Secure pump to cover (200a) with 2 screws (200d).

### NOTE:

- 4 screws are supplied in the kit but only 2 are used to mount the pump housing (A) to the drum cover (200a). Discard the extra 2 screws.
- Use the set of mounting holes that are 4.25 inches apart to secure the pump housing (A) to the drum cover (200a). The pump housing will not line up correctly to the holes that are 5 inches apart. Refer to FIG. 1.
- When properly installed the outlet housing (A) rests on cover (200a).

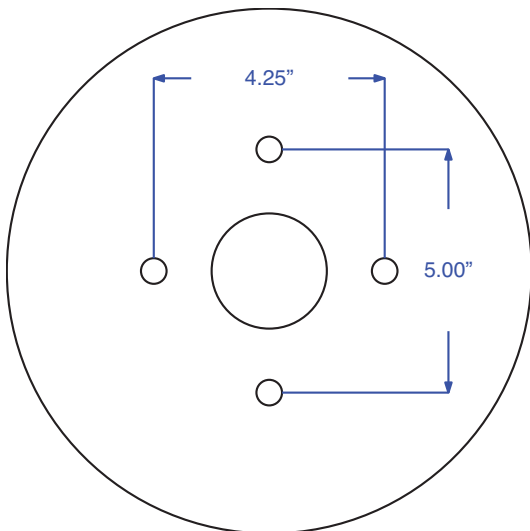


FIG. 1

4. Install pump lever (112), pivot screw (121), and hose (500).
5. To complete the Pump System Setup follow instructions for Installing Cover Assembly on Fluid Container, steps 1-5.

## Replacing Empty Fluid Container

### Removing Empty Fluid Container

#### NOTICE

To avoid contamination when changing fluid container, do not let any cover assembly components touch the floor or any dirty surface.

1. Loosen thumb screws (200b) holding cover assembly to fluid container. Remove cover assembly. Discard empty fluid container.
2. Place cover assembly on clean paper, cardboard or shop rag. DO NOT PLACE DIRECTLY ON FLOOR.

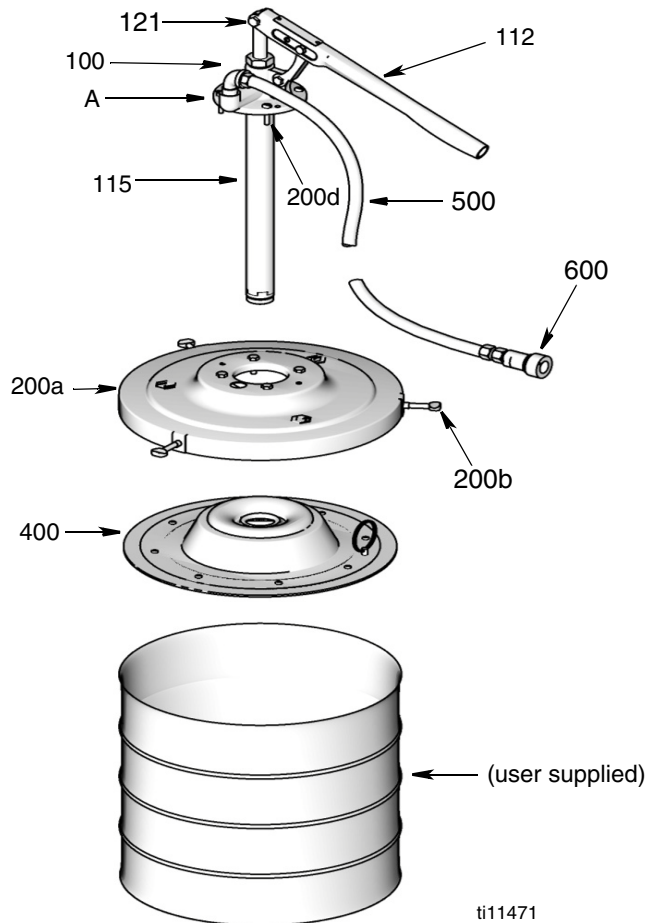
### Installing Cover Assembly on Fluid Container

1. Before opening fluid container, carefully clean off top to avoid contamination; then remove top.
2. Install cover assembly (200) on opened fluid container.
3. Secure cover assembly (200) to pail with thumb screws (200b).
4. To **Prime pump**, operate the hand pump until fluid flows out hose end.

- Install coupler (600) to adapter (300) on end of hose (500).

**NOTICE**

The pump will not prime with the coupler installed.

**FIG. 2****Service**

Refer to FIG. 2 (page 3) and FIG. 6 (page 5) for all Service instructions on this page.

**NOTICE**

Clean all parts in non-flammable solvent. Dry all parts thoroughly before reassembly.

- Loosen thumb screws (200b) holding cover assembly (200) to fluid container. Remove cover assembly.
- Place cover assembly (200) on clean paper, cardboard or shop rag. **DO NOT PLACE DIRECTLY ON FLOOR.**
- Loosen screws (200d) to remove pump (100) from cover (200a).
- Remove follow plate (400) from riser tube (115).
- Unscrew riser tube (115) from outlet housing (A). Clean and inspect parts. Replace worn or damaged parts.
- Pull riser tube down connecting rod (120) and piston (101).
- Unscrew piston (101) from connecting rod (120). Disassemble piston and clean and inspect parts. Replace worn or damaged parts.
- Loosen packing nut (113).
- Disconnect rod (120) from pump lever (112). Pull connecting rod down out of outlet housing (A).
- Unscrew packing nut (113) and remove packings (114). Clean and inspect parts. Replace worn or damaged parts.
- Reassemble pump in reverse order, following the lubrication and sealant notes in FIG. 6. Tighten packing nut (113) just enough to stop leakage.

# Pump

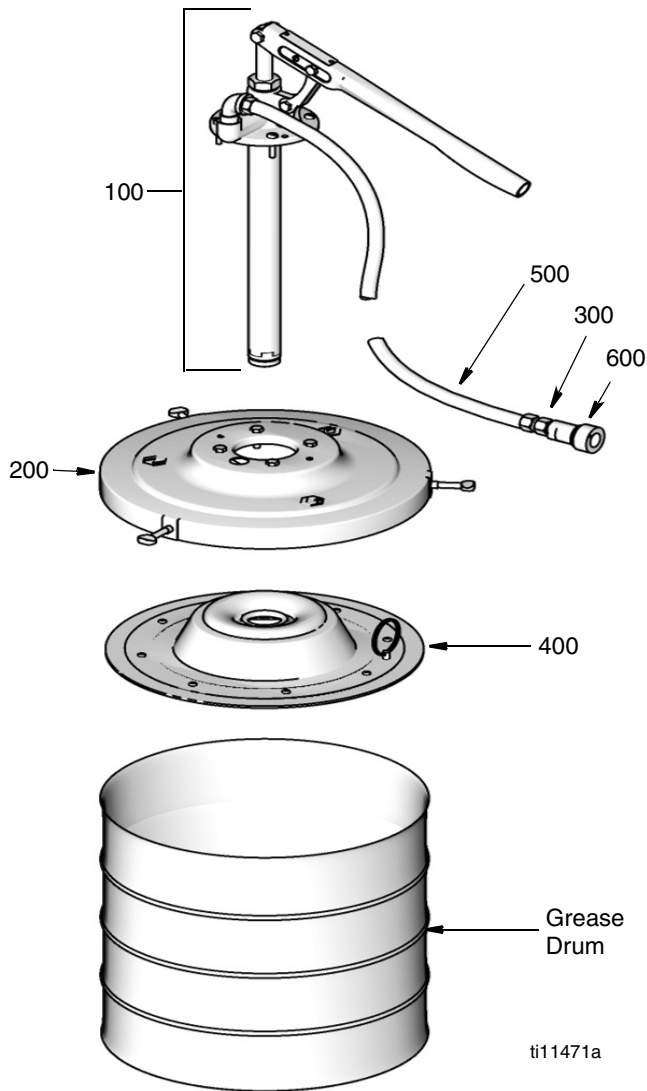


FIG. 3

Ref. No.	Part No.	Description	Qty.
100	247500	PUMP, hand, 35 lb (page 5)	1
200	222058	COVER, 35 lb	1
300	159842	ADAPTER	1
400	220653	PLATE, follow, 35#	1
500	220591	HOSE, coupled, 6-foot	1
600	121474	COUPLER, quick disconnect, 1/4-inch npt(f)	1

## Cover 222058 (200)

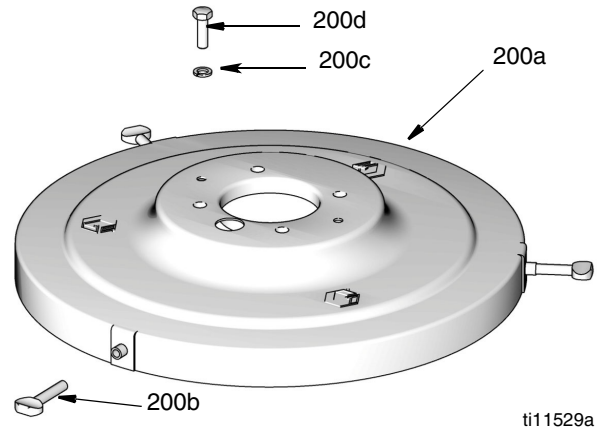


FIG. 4

Ref. No.	Part No.	Description	Qty.
200a	206522	. COVER, pail	1
200b	100220	. SCREW, thumb, 5/16	3
200c	100016	. WASHER, lock	2
200d	100022	. SCREW, cap, 1/4-20x x 0.75	2

## Follow Plate 220653 (400)

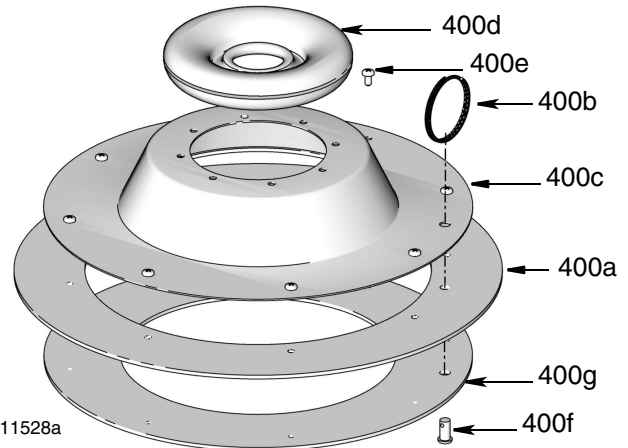
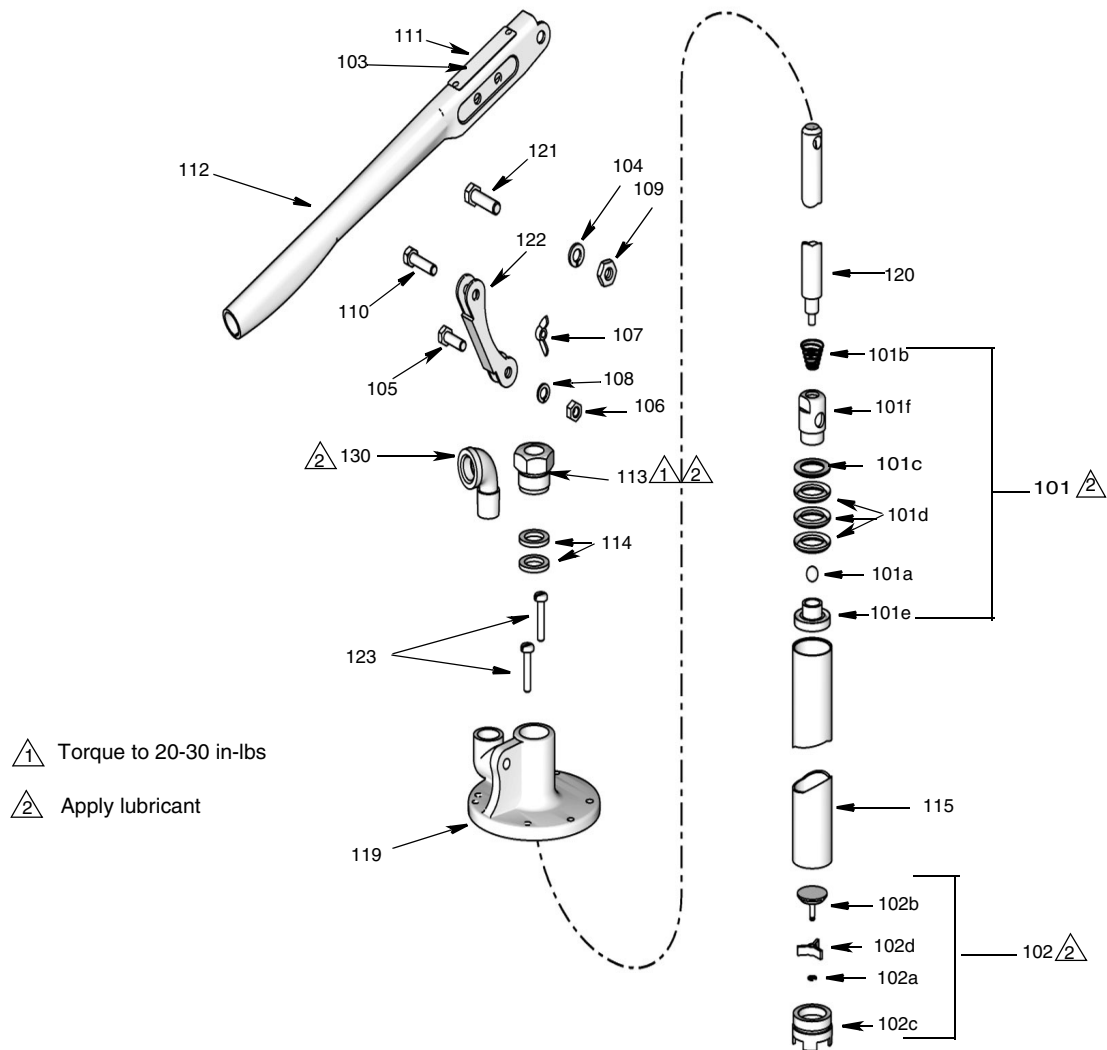


FIG. 5

Ref. No.	Part No.	Description	Qty.
400a	183241	. WIPER	1
400b	183245	. SPRING, retaining	1
400c	183242	. PLATE, follow	1
400d	186104	. GROMMET, follow plate	1
400e	103833	. SCREW, machin; bnd-hd; 10-32 x 0.375" long	8
400f	108714	. PIN, clevis	1
400g	220651	. PLATE, wiper	1

# Hand Pump (100)



ti11470a

FIG. 6

Ref No.	Part No.	Description	Qty	Ref No.	Part No.	Description	Qty
100	247500	PUMP, hand, 5-gallon	1	107	100191	NUT, wing	1
101	200753	PISTON	1	108	100214	WASHER, lock	1
101a	100114	. BALL, steel, 7/16 in. diameter	1	109	100340	NUT	1
101b	150134	. SPRING, compression	1	110	150662	SCREW, pivot	1
101c	150463	. GLAND, male	1	111	150707	PLATE, designation	1
101d	150464	. V-PACKING, leather	3	112	158769	HANDLE, lever	1
101e	150465	. SEAT, piston	1	113	154513	NUT, packing	1
101f	152559	. HOUSING, piston	1	114	154514	PACKING, flat	2
102	202162	VALVE, foot	1	115	15M764	TUBE, riser	1
102a	101021	. RING, retaining	1	119	159923	HOUSING, outlet	1
102b	156738	. VALVE, poppet	1	120	15M767	ROD, connecting, hand pump	1
102c	156739	. BODY, valve	1	121	159931	SCREW, pivot	1
102d	156750	. GUIDE, poppet	1	122	150726	LINK, connecting	1
103	102556	RIVET, blind	2	123	101120	SCREW, machine, pnh	4
104	100133	WASHER, lock	1	130	100119	ELBOW, pipe	1
105	100184	SCREW, cap, hex head	1				
106	100187	NUT	1				

# Graco Standard Warranty

Graco warrants all equipment referenced in this document which is manufactured by Graco and bearing its name to be free from defects in material and workmanship on the date of sale to the original purchaser for use. With the exception of any special, extended, or limited warranty published by Graco, Graco will, for a period of twelve months from the date of sale, repair or replace any part of the equipment determined by Graco to be defective. This warranty applies only when the equipment is installed, operated and maintained in accordance with Graco's written recommendations.

This warranty does not cover, and Graco shall not be liable for general wear and tear, or any malfunction, damage or wear caused by faulty installation, misapplication, abrasion, corrosion, inadequate or improper maintenance, negligence, accident, tampering, or substitution of non-Graco component parts. Nor shall Graco be liable for malfunction, damage or wear caused by the incompatibility of Graco equipment with structures, accessories, equipment or materials not supplied by Graco, or the improper design, manufacture, installation, operation or maintenance of structures, accessories, equipment or materials not supplied by Graco.

This warranty is conditioned upon the prepaid return of the equipment claimed to be defective to an authorized Graco distributor for verification of the claimed defect. If the claimed defect is verified, Graco will repair or replace free of charge any defective parts. The equipment will be returned to the original purchaser transportation prepaid. If inspection of the equipment does not disclose any defect in material or workmanship, repairs will be made at a reasonable charge, which charges may include the costs of parts, labor, and transportation.

**THIS WARRANTY IS EXCLUSIVE, AND IS IN LIEU OF ANY OTHER WARRANTIES, EXPRESS OR IMPLIED, INCLUDING BUT NOT LIMITED TO WARRANTY OF MERCHANTABILITY OR WARRANTY OF FITNESS FOR A PARTICULAR PURPOSE.**

Graco's sole obligation and buyer's sole remedy for any breach of warranty shall be as set forth above. The buyer agrees that no other remedy (including, but not limited to, incidental or consequential damages for lost profits, lost sales, injury to person or property, or any other incidental or consequential loss) shall be available. Any action for breach of warranty must be brought within two (2) years of the date of sale.

**GRACO MAKES NO WARRANTY, AND DISCLAIMS ALL IMPLIED WARRANTIES OF MERCHANTABILITY AND FITNESS FOR A PARTICULAR PURPOSE, IN CONNECTION WITH ACCESSORIES, EQUIPMENT, MATERIALS OR COMPONENTS SOLD BUT NOT MANUFACTURED BY GRACO.** These items sold, but not manufactured by Graco (such as electric motors, switches, hose, etc.), are subject to the warranty, if any, of their manufacturer. Graco will provide purchaser with reasonable assistance in making any claim for breach of these warranties.

In no event will Graco be liable for indirect, incidental, special or consequential damages resulting from Graco supplying equipment hereunder, or the furnishing, performance, or use of any products or other goods sold hereto, whether due to a breach of contract, breach of warranty, the negligence of Graco, or otherwise.

## **FOR GRACO CANADA CUSTOMERS**

The Parties acknowledge that they have required that the present document, as well as all documents, notices and legal proceedings entered into, given or instituted pursuant hereto or relating directly or indirectly hereto, be drawn up in English. Les parties reconnaissent avoir convenu que la rédaction du présente document sera en Anglais, ainsi que tous documents, avis et procédures judiciaires exécutés, donnés ou intentés, à la suite de ou en rapport, directement ou indirectement, avec les procédures concernées.

# Graco Information

**TO PLACE AN ORDER**, contact your Graco distributor or call to identify the nearest distributor.

**Phone:** 612-623-6928 or **Toll Free:** 1-800-533-9655, **Fax:** 612-378-3590.

*All written and visual data contained in this document reflects the latest product information available at the time of publication.  
Graco reserves the right to make changes at any time without notice.*

*Original instructions. This manual contains English. MM 312758*

**Graco Headquarters:** Minneapolis

**International Offices:** Belgium, China, Japan, Korea

**GRACO INC. P.O. BOX 1441 MINNEAPOLIS, MN 55440-1441**

Copyright 2008, Graco Inc. is registered to I.S. EN ISO 9001

[www.graco.com](http://www.graco.com)

1/2008, Revised November 2012