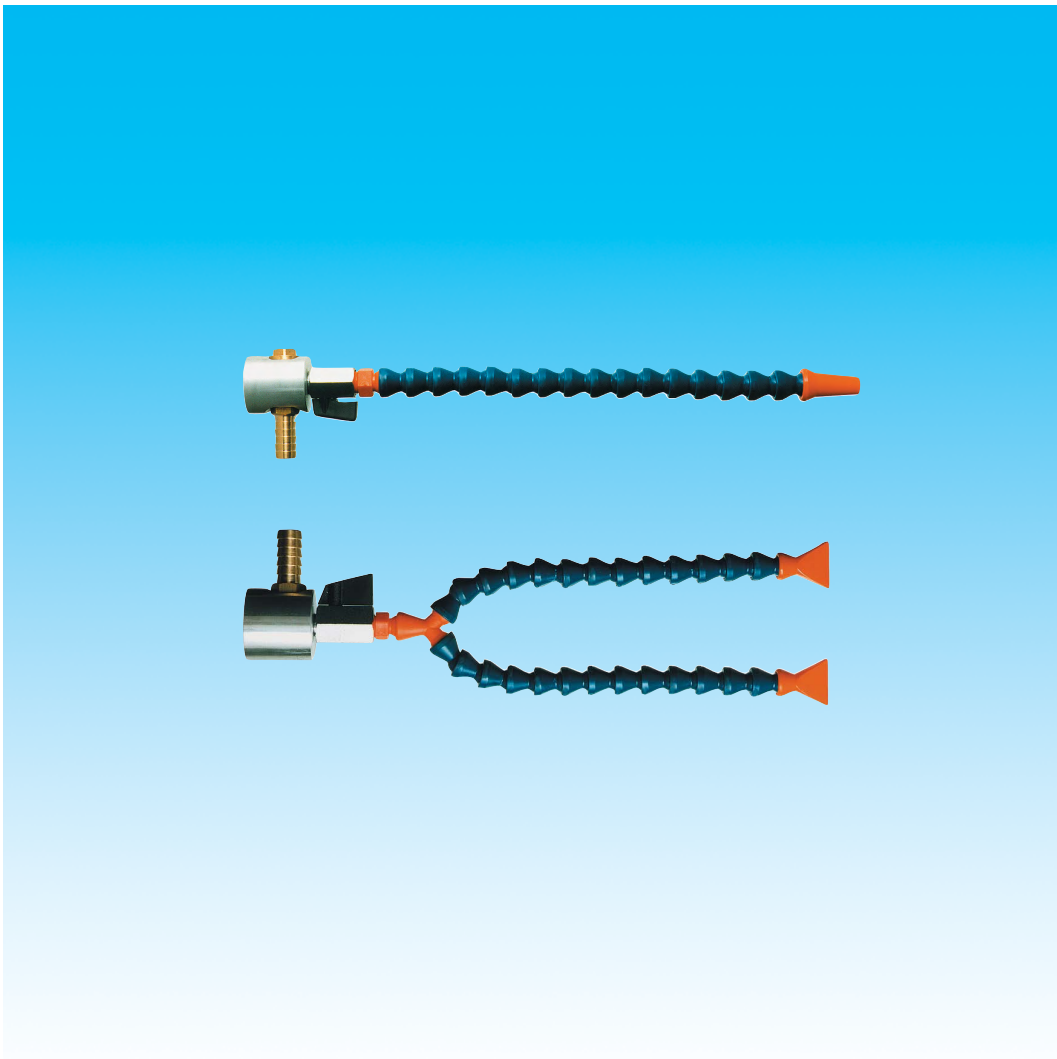


Dokumentation

Kühlmittel-Gelenkschlauchsystem **- Cool Line** **- Typ CLS ... -**



1. Inhalt

| | |
|--|---|
| 1. Inhaltsverzeichnis | 1 |
| 2. Beschreibung | 1 |
| 3. Artikelnummern und technische Daten | 1 |
| 3.1 Typ CLS 141 | 1 |
| 3.2 Typ CLS 121 | 1 |
| 4. Abmessungen | 2 |
| 4.1 Typ CLS 141 | 2 |
| 4.2 Typ CLS 121 | 3 |

2. Beschreibung

Das Gelenkschlauchsystem Cool-Line eignet sich zum Durchleiten von Petroleumprodukten, Kühlmitteln, Chemikalien sowie Dielektrikum von Errodiermaschinen.

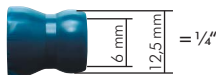
Das System umfasst ein umfangreiches Sortiment an Zubehörteilen wie Runddüsen, Flachdüsen, Gewindeanschlüsse, Y-Verteiler, T-verteiler, Abstellhähnen, etc..

Die Cool-Line Produkte werden aus hochwertigem Kunststoffgranulat gefertigt.

Cool-Line-Module halten auch bei höherer Druckbelastung stand und gewährleisten die Richtungsstabilität des Flüssigkeitsstrahls, dadurch dass die Module eng ineinander verrastet sind.

Ohne Adapter zu 80% der herkömmlichen Systeme kompatibel.

3. Artikelnummern und technische Daten



Kühlmittel-Gelenkschlauchsystem - Cool-Line 1/4" (NW 6)

PN 6

Werkstoff: POM

Durchfluss: bis 15,4 l/min.

Verwendung: Dieses System eignet sich zum Durchleiten von Petroleumprodukten, Kühlmitteln, Chemikalien sowie Dielektrikum von Errodiemaschinen.

Kompatibel zu den Systemen: Flexoline, Hydra, Kümli, Loc-Line und Ossmann

Teilkompatibel zu den Systemen: Snaploc, Lubecool, Vario und Maxiflex

| Typ | Beschreibung | Bild |
|---------------|---|------|
| CLS 141-SET | Set: 2 Gelenkschlauchstücke: 2 x 140 mm=280 mm (2 x 10 Module) 2 Gewindeanschlüsse (1 x R 1/8", 1 x R 1/4") 3 Runddüsen (1,6 mm, 3,2 mm und 6,4 mm) 1 Flachdüse 24 mm breit (innen) | 1 |
| CLS 141-MAG 1 | Set mit Magnetteuf: 1 Gelenkschlauch (16 Module) mit Gewindestück R 1/4" 1 Runddüse (6,4 mm) 1 Magnetteuf mit Kugelhahn und 13 mm Schlauchanschluss | 2 |
| CLS 141-MAG 2 | Set mit Magnetteuf: 2 Gelenkschlauchstücke (13 Module) 2 Flachdüsen 24 mm breit (innen) 1 Y-Verteiler mit Gewindestück R 1/4" 1 Magnetteuf mit Kugelhahn und 13 mm Schlauchanschluss | 3 |
| CLS 141 | Gelenkschlauchstück 140 mm (10 Module) | |
| CLS 141-GS18 | Gewindestück R 1/8" | 4 |
| CLS 141-GS14 | Gewindestück R 1/4" | 4 |
| CLS 141-RD16 | Runddüse 1,6 mm Ø (innen) | 5 |
| CLS 141-RD32 | Runddüse 3,2 mm Ø (innen) | 5 |
| CLS 141-RD64 | Runddüse 6,4 mm Ø (innen) | 5 |
| CLS 141-FD24 | Flachdüse 24 mm breit (innen) | 6 |
| CLS 141-FD30 | Flachdüse 30 mm breit (innen) | 6 |
| CLS 141-FDL16 | Flachdüse 16 Loch | 6 |
| CLS 141-Y | Y-Verteiler | 7 |
| CLS 141-T | T-Verteiler | 8 |
| CLS 141-L | Winkelanschluss | 9 |
| CLS 141-MU | Muffe | 10 |
| CLS 141-KHS | Absperrhahn beiderseits mit Gelenkschlauchanschluss | 11 |
| CLS 141-KHG | Absperrhahn mit Gelenkschlauchanschluss und Gewinde R 1/4" | 11 |
| CLS 141-RUCK | Rückschlagventil für Gelenkschlauch | |
| CLS 141-ZANGE | Montagezange für Gelenkschlauch 1/4" | 12 |



Kühlmittel-Gelenkschlauchsystem - Cool-Line 1/2" (NW 12)

PN 6

Werkstoff: POM

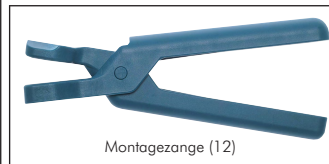
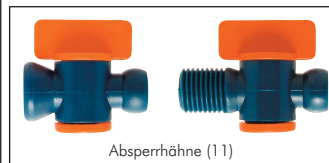
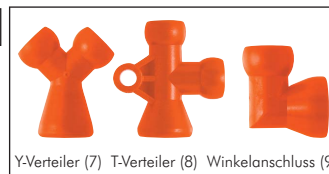
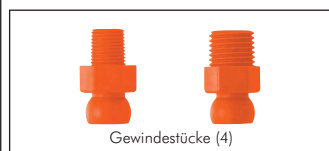
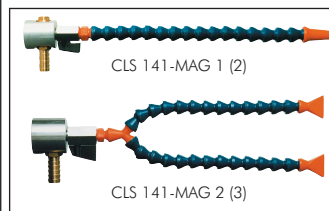
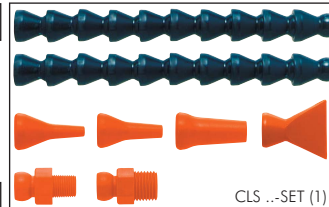
Durchfluss: bis 28,8 l/min.

Verwendung: Dieses System eignet sich zum Durchleiten von Petroleumprodukten, Kühlmitteln, Chemikalien sowie Dielektrikum von Errodiemaschinen.

Kompatibel zu den Systemen: Flexoline, Hydra, Kümli, Loc-Line und Ossmann

Teilkompatibel zu den Systemen: Snaploc, Lubecool, Vario und Maxiflex

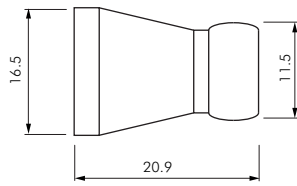
| Typ | Beschreibung | Bild |
|---------------|---|------|
| CLS 121-SET | Set: 2 Gelenkschlauchstücke 2 x 130 mm=260 mm (2 x 5 Module) 2 Gewindeanschlüsse (1 x R 3/8", 1 x R 1/2") 3 Runddüsen (6,4 mm, 9,5 mm und 12,7 mm) 1 Flachdüse 32 mm breit (innen) | 1 |
| CLS 121 | Gelenkschlauchstück 130 mm (5 Module) | |
| CLS 121-GS38 | Gewindestück R 3/8" | 4 |
| CLS 121-GS12 | Gewindestück R 1/2" | 4 |
| CLS 121-RD64 | Runddüse 6,4 mm Ø (innen) | 5 |
| CLS 121-RD95 | Runddüse 9,5 mm Ø (innen) | 5 |
| CLS 121-RD127 | Runddüse 12,7 mm Ø (innen) | 5 |
| CLS 121-FD32 | Flachdüse 32 mm breit (innen) | 6 |
| CLS 121-FD47 | Flachdüse 47 mm breit (innen) | 6 |
| CLS 121-FD60 | Flachdüse 60 mm breit (innen) | 6 |
| CLS 121-Y | Y-Verteiler | 7 |
| CLS 121-T | T-Verteiler | 8 |
| CLS 121-L | Winkelanschluss | 9 |
| CLS 121-MU | Muffe | 10 |
| CLS 121-YR | Y-Reduzierung (1 x 1/2" --> 2 x 1/4") | 7 |
| CLS 121-KHS | Absperrhahn beiderseits mit Gelenkschlauchanschluss | 11 |
| CLS 121-KHG | Absperrhahn mit Gelenkschlauchanschluss und Gewinde R 1/2" | 11 |
| CLS 121-ZANGE | Montagezange für Gelenkschlauch 1/2" | 12 |



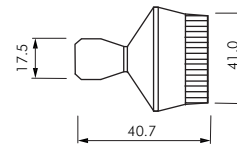
4. Abmessungen

4.1 CLS 141 ...

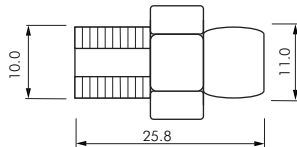
CLS 141



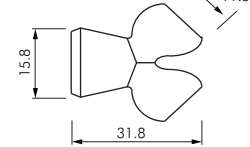
CLS 141-FDL16



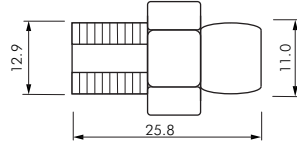
CLS 141-GS18



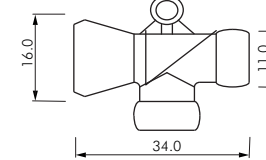
CLS 141-Y



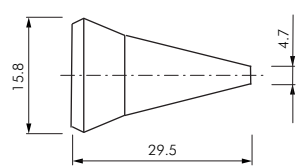
CLS 141-GS14



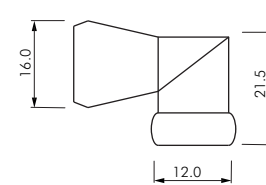
CLS 141-T



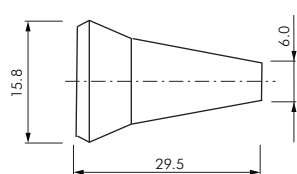
CLS 141-RD16



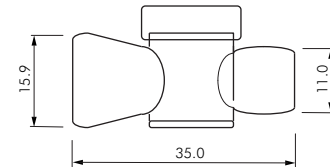
CLS 141-L



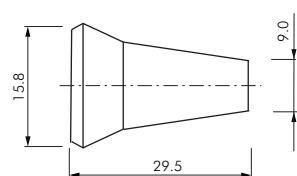
CLS 141-RD32



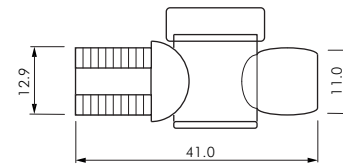
CLS 141-KHS



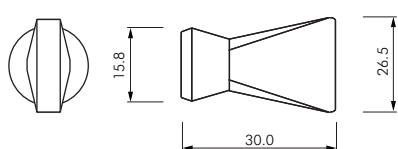
CLS 141-RD64



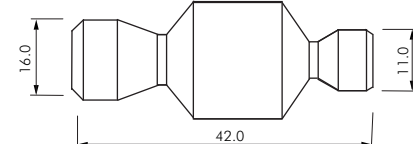
CLS 141-KHG



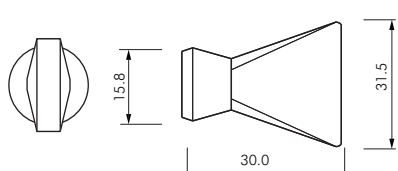
CLS 141-FD24



CLS 141-RUCK



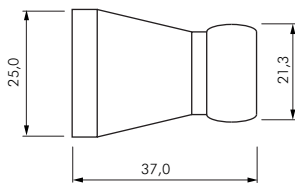
CLS 141-FD30



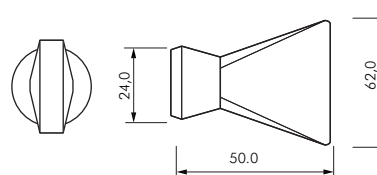
Alle Angaben verstehen sich als unverbindliche Richtwerte! Für nicht schriftlich bestätigte Datenauswahl übernehmen wir keine Haftung. Druckangaben beziehen sich, soweit nicht anders angegeben, auf Flüssigkeiten der Gruppe II bei +20°C.

4.2 CLS 121 ...

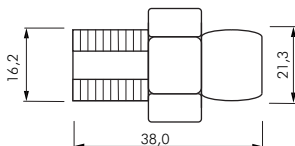
CLS 121



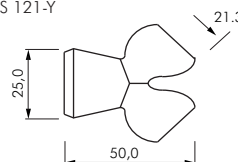
CLS 121-FD60



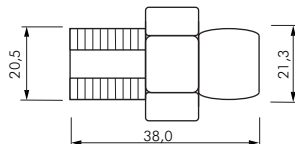
CLS 121-GS38



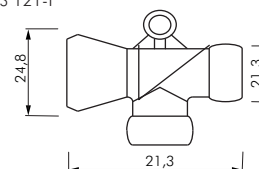
CLS 121-Y



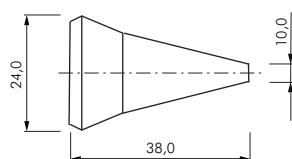
CLS 121-GS12



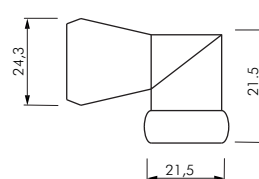
CLS 121-T



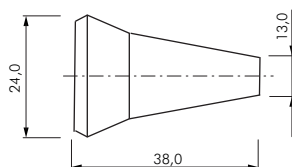
CLS 121-RD64



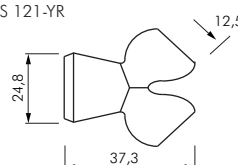
CLS 121-L



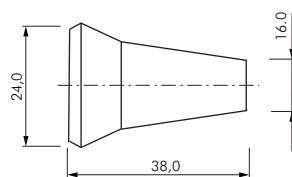
CLS 121-RD95



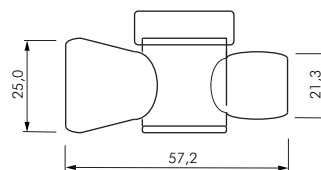
CLS 121-YR



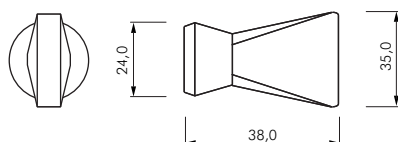
CLS 121-RD127



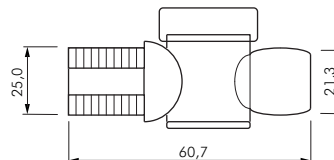
CLS 121-KHS



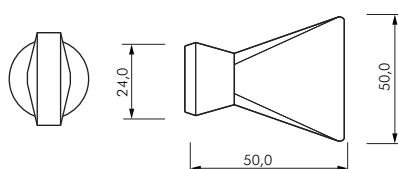
CLS 121-FD32



CLS 121-KHG



CLS 121-FD47

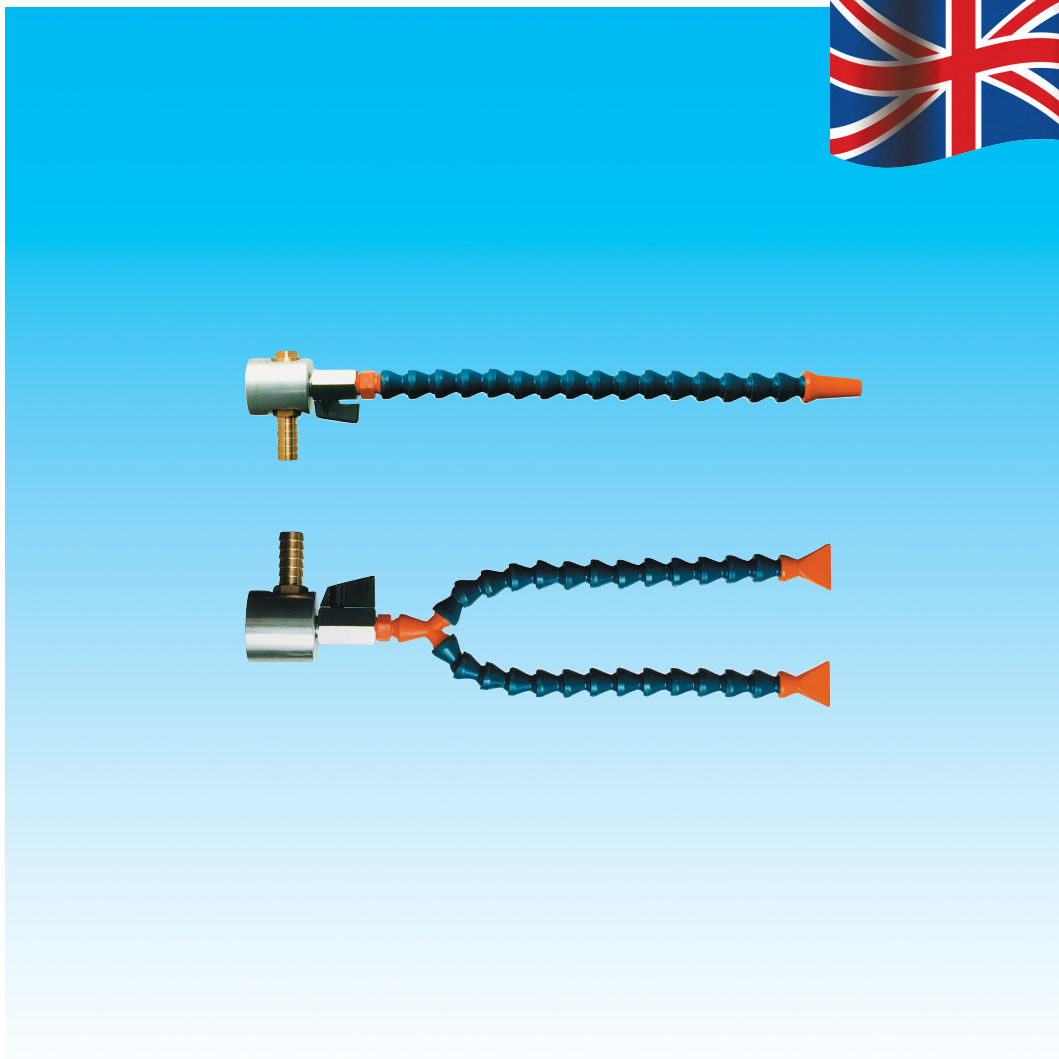


Documentation

Adjustable coolant hose system

- Cool Line

- Type CLS ... -



1. Content

| | |
|--------------------------------------|---|
| 1. Content | 1 |
| 2. Description | 1 |
| 3. Articlenumbers and technical Data | 2 |
| 3.1 Type CLS 141 | 2 |
| 3.2 Type CLS 121 | 2 |
| 4. Dimensions | 3 |
| 4.1 Type CLS 141 | 3 |
| 4.2 Type CLS 121 | 4 |

2. Description

This system is suitable for conducting petroleum products, coolants, chemicals and dielectric of EDM machines.

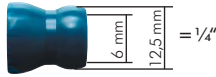
Cool Line comprises an extensive range of accessories and parts such as round nozzles, flat nozzles, threaded screw connections, Y distributors, Y distributors, shutoff valves, etc..

Cool Line products are made of high-quality plastic pellets, which makes them more resistant.

Cool Line Modules withstand even higher pressure loads and ensure directional stability of the liquid jet as the modules snap into one another so tightly.

The Cool Line System is compatible with 80% of conventional systems without any adapters.

3. Articulenumbers und technical data



Adjustable coolant hose - Cool-Line 1/4" (NW 6)

PN 6

Materials: POM

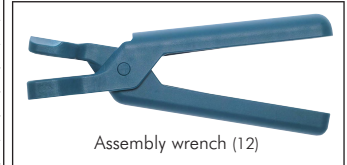
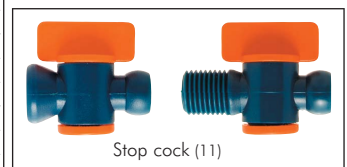
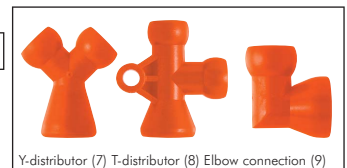
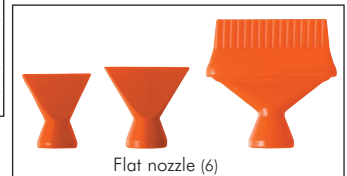
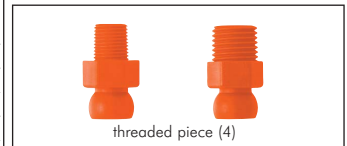
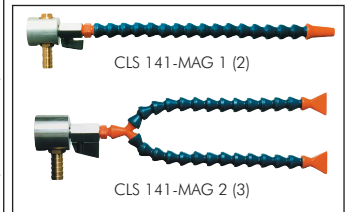
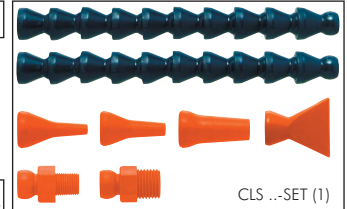
Flow: up to 15,4 l/min.

Suitable: This system is suitable for conducting petroleum products, coolants, chemicals and dielectric of EDM machines.

Compatible with the systems: Flexoline, Hydra, Kümli, Loc-Line und Ossmann

Parts compatible with the systems: Snaploc, Lubecool, Vario und Maxiflex

| Type | Description | Image |
|----------------|--|-------|
| CLS 141-SET | Set: 2 adjustable coolant hose pieces: 2 x 140 mm = 280 mm (2 x 10 modules) 2 thread connections (1 x R 1/8", 1 x R 1/4") 3 round nozzles (1,6 mm, 3,2 mm and 6,4 mm) 1 flat nozzle 24 mm wide (inside) | 1 |
| CLS 141-MAG 1 | Set with magnetic foot: 1 adjustable coolant hose (16 modules) with threaded piece R 1/4" 1 round nozzle (6, 4 mm) | 2 |
| CLS 141 -MAG 2 | Set with magnetic foot: 2 adjustable coolant hose pieces (13 modules) 2 flat nozzles 24 mm wide (inside) 1 Y distributor block with threaded piece R 1/4" 1 magnetic foot with ball valve and 13 mm hose connection | 3 |
| CLS 141 | Adjustable coolant hose piece 140 mm (10 modules) | |
| CLS 141-GS18 | threaded piece R 1/8" | 4 |
| CLS 141-GS14 | threaded piece R 1/4" | 4 |
| CLS 141-RD16 | Round nozzle with 1.6 mm Ø (inside) | 5 |
| CLS 141-RD32 | Round nozzle with 3.2 mm Ø (inside) | 5 |
| CLS 141-RD64 | Round nozzle with 6.4 mm Ø (inside) | 5 |
| CLS 141-FD24 | Flat nozzle 24 mm wide (inside) | 6 |
| CLS 141-FD30 | Flat nozzle 30 mm wide (inside) | 6 |
| CLS 141-FDL16 | 16-hole flat nozzle | 6 |
| CLS 141-Y | Y-distributor | 7 |
| CLS 141-T | T-distributor | 8 |
| CLS 141-L | Elbow connection | 9 |
| CLS 141-MU | Sleeve | 10 |
| CLS 141-KHS | Stop cock with adjustable coolant hose connection on both sides | 11 |
| CLS 141-KHG | Stop cock with adjustable coolant hose connection and thread R 1/4" | 11 |
| CLS 141-RUCK | Check valve for adjustable coolant hose | |
| CLS 141-ZANGE | Assembly wrench for adjustable coolant hose 1/4" | 12 |



Adjustable coolant hose - Cool-Line 1/2" (NW 12)

PN 6

Materials: POM

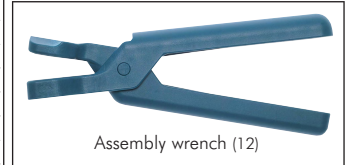
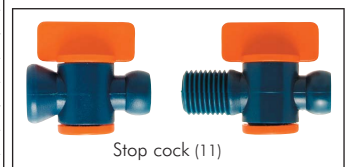
Flow: up to 28,8 l/min.

Suitable: This system is suitable for conducting petroleum products, coolants, chemicals and dielectric of EDM machines.

Compatible with the systems: Flexoline, Hydra, Kümli, Loc-Line und Ossmann

Parts compatible with the systems: Snaploc, Lubecool, Vario und Maxiflex

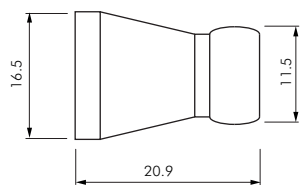
| Type | Description | Image |
|---------------|---|-------|
| CLS 121-SET | Set: 2 adjustable coolant hose pieces 2 x 130 mm = 260 mm (2 x 5 modules) 2 thread connections (1 x R 3/8", 1 x R 1/2") 3 round nozzles (6,4 mm, 9,5 mm and 12,7 mm) 1 flat nozzle 32 mm wide (inside) | 1 |
| CLS 121 | Adjustable coolant hose piece 130 mm (5 modules) | |
| CLS 121-GS38 | threaded piece R 3/8" | 4 |
| CLS 121-GS12 | threaded piece R 1/2" | 4 |
| CLS 121-RD64 | Round nozzle with 6.4 mm Ø (inside) | 5 |
| CLS 121-RD95 | Round nozzle with 9.5 mm Ø (inside) | 5 |
| CLS 121-RD127 | Round nozzle with 12.7 mm Ø (inside) | 5 |
| CLS 121-FD32 | Flat nozzle 32 mm wide (inside) | 6 |
| CLS 121-FD47 | Flat nozzle 47 mm wide (inside) | 6 |
| CLS 121-FD60 | Flat nozzle 60 mm wide (inside) | 6 |
| CLS 121-Y | Y-distributor | 7 |
| CLS 121-T | T-distributor | 8 |
| CLS 121-L | Elbow connection | 9 |
| CLS 121-MU | Sleeve | 10 |
| CLS 121-YR | Y-Reducer (1 x 1/2" --> 2 x 1/4") | 7 |
| CLS 121-KHS | Stop cock with adjustable coolant hose connection on both sides | 11 |
| CLS 121-KHG | Stop cock with adjustable coolant hose connection and thread R 1/2" | 11 |
| CLS 121-ZANGE | Assembly wrench for adjustable coolant hose 1/2" | 12 |



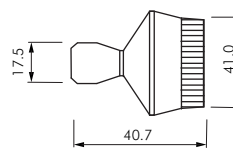
4. Dimensions

4.1 CLS 141 ...

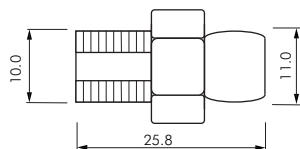
CLS 141



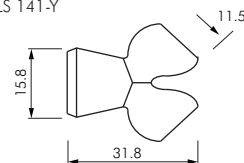
CLS 141-FDL16



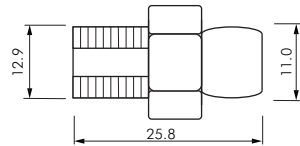
CLS 141-GS18



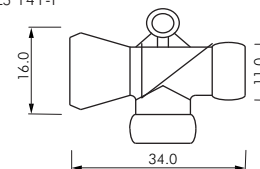
CLS 141-Y



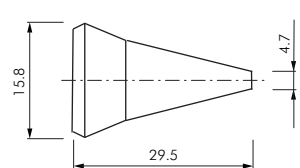
CLS 141-GS14



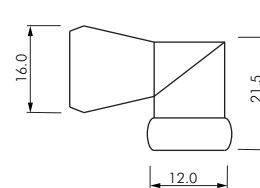
CLS 141-T



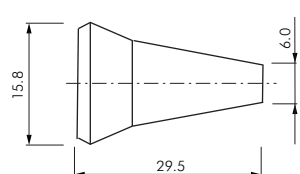
CLS 141-RD16



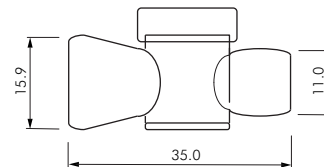
CLS 141-L



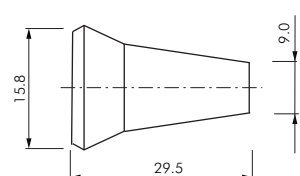
CLS 141-RD32



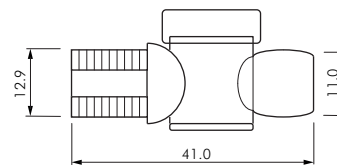
CLS 141-KHS



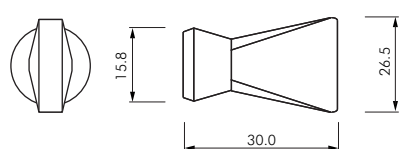
CLS 141-RD64



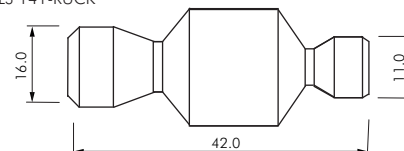
CLS 141-KHG



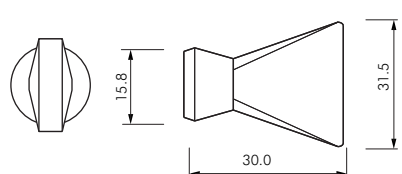
CLS 141-FD24



CLS 141-RUCK



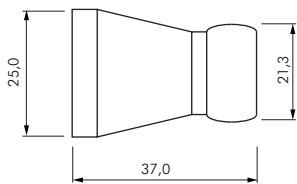
CLS 141-FD30



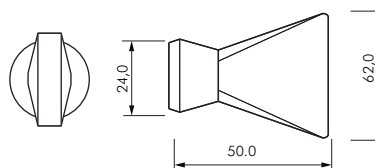
No responsibility is taken for the correctness of this information.

4.2 CLS 121 ...

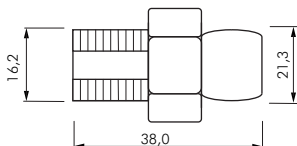
CLS 121



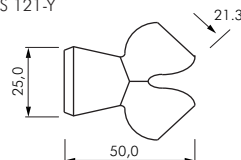
CLS 121-FD60



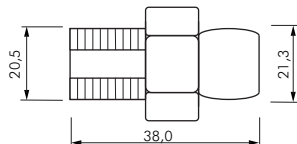
CLS 121-GS38



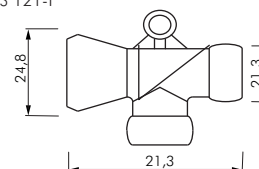
CLS 121-Y



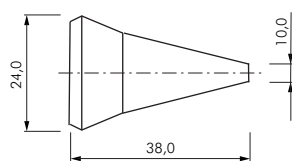
CLS 121-GS12



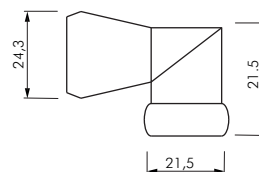
CLS 121-T



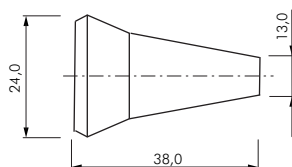
CLS 121-RD64



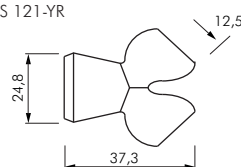
CLS 121-L



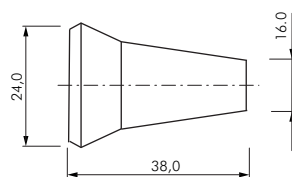
CLS 121-RD95



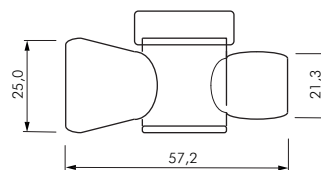
CLS 121-YR



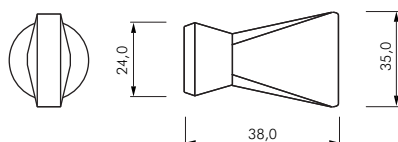
CLS 121-RD127



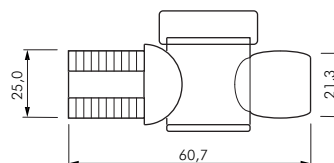
CLS 121-KHS



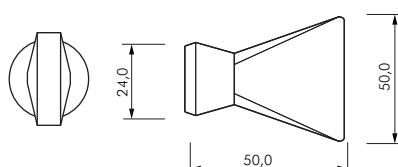
CLS 121-FD32



CLS 121-KHG



CLS 121-FD47



No responsibility is taken for the correctness of this information.