

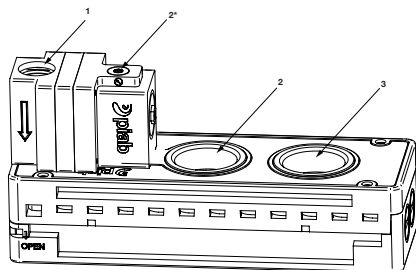
MANUAL

piSAVE™ optimize



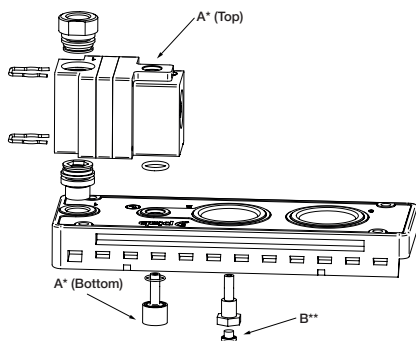
Integrated version for piCLASSIC/Classic

OVERVIEW



1	Compressed air	Swivelling connections, push-in or threaded connections
2	Vacuum	Main vacuum connection
3	Exhaust	Suitable for silencers
2*	Vacuum sensing	Suitable place for vacuum gauge or remote vacuum sensing

MOUNTING

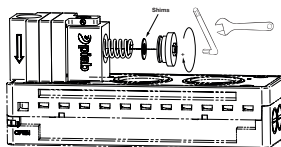


Already mounted when ordered as a part of the piCLASSIC code. When ordered as an upgrade kit for piCLASSIC/Classic, mount according to picture above.

A*) Change position of plug A from top to bottom for remote sensing with piCLASSIC pump

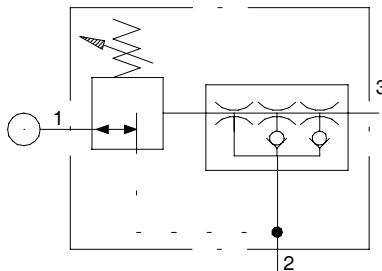
B**) Use plug B for remote sensing with Classic pump.

SET THE VACUUM RANGE

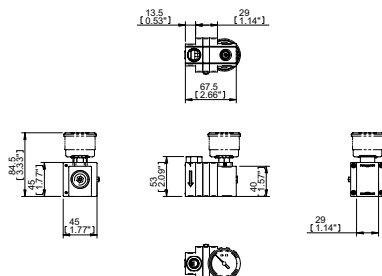


Vacuum level -kPa [-inHg]	
30-45 [9 - 13.5]	No shim
45-60 [13.5 - 18]	Shim

PNEUMATIC DIAGRAM

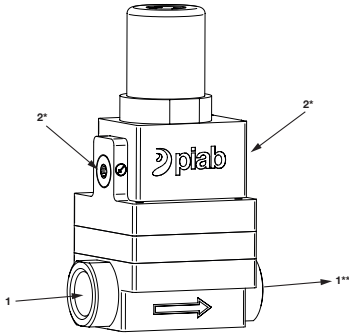


DIMENSIONS



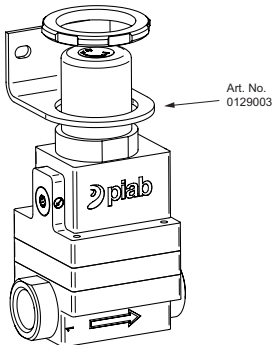
Standalone

OVERVIEW



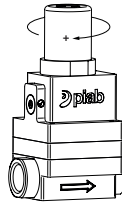
1	Compressed air	Swivelling connections
1**	Compressed air	Regulated feed pressure
2*	Vacuum sensing 1	Suitable place for vacuum gauge
2*	Vacuum sensing 2	Remote vacuum sensing. Avoid distance to vacuum system longer than 3m [10 ft].

MOUNTING



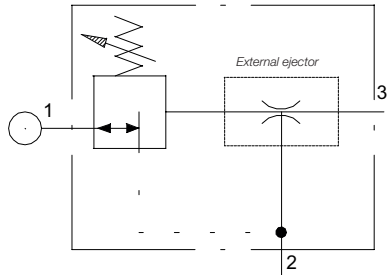
Mounting bracket according to picture above is available as an accessory.

SET THE VACUUM RANGE

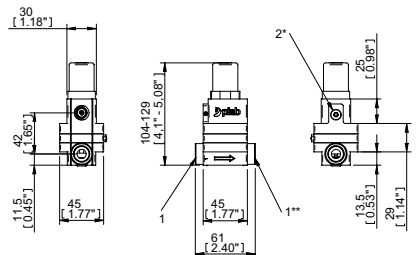


Vacuum level -kPa [-inHg]
25-70 [7.5-21]

PNEUMATIC DIAGRAM



DIMENSIONS



TECHNICAL DATA

Feed pressure (max.)	0,7 [101.5]	MPa [psi]
Feed pressure (min.)	0,4 [58]	MPa [psi]
Pressure drop (feed pressure)	0,05 (@ 0,7 MPa & 15 NI/s) [7.25 (@ 101.5 MPa & 31.8 scfm)]	MPa [psi]
Material	Al, CuZn, HNBR, NBR, SS, PA66	-
Temperature range	-10-60 [14-140]	°C [°F]
Weight	324 (268)* [11.4 (9.45)*]	g [oz]
Operation range	25-70 (30-60)* [7.5-21 (9-18)*]	-kPa [-inHg]
Accuracy	±3 [0.89]	kPa [inHg]
Flow (min.)	1.67 [3.54] @ recommended ejector/pump feed pressure	NI/s [scfm]
Flow (max.)	15	NI/s [scfm]
Life span	5 (5 million)	years (cycles)
Particle size (min.)	5	µm
Distance (max.)to vacuum system**	3 [10]	m [ft]

*) piCLASSIC/Classic integrated version.

***) Vacuum sensing hose.

ORDERING INFO

Description	Art. No.
piSAVE™ optimize stand-alone 25-70 -kPa G3/8"	0128999
piSAVE™optimize stand-alone 25-70 -kPa 3/8" NPT	0129000
piSAVE™ optimize upgrade kit piCLASSIC/Classic	0129002

SAFETY PRECAUTIONS

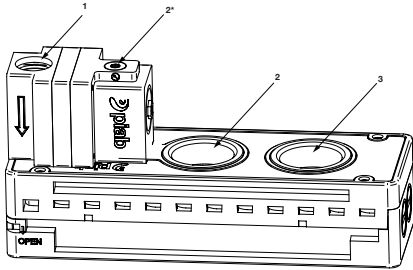
Irresponsible use of supply air may cause injury, supply air must never be used for anything else than designated purposes. Remember to always shut off the air supply when cleaning or servicing.

WARRANTY

Piab provides a 1-year warranty for piSAVE™ optimize.

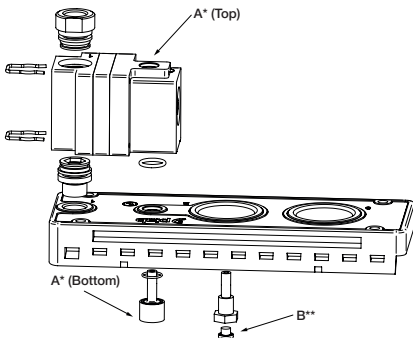
Integrierte Ausführung für piCLASSIC/Classic

ÜBERBLICK



1	Druckluft	Schwenkbare Anschlüsse. Steck- oder Gewindeanschlüsse
2	Vakuum	Hauptvakuumanschluss
3	Abluft	Geeignet für Schalldämpfer
2*	Vakuummessung	Geeignete Stelle für Vakuummessgerät oder Fernmessung des Unterdruckes

EINBAU

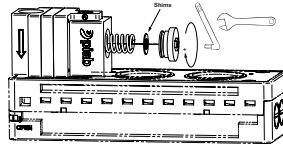


Bei Bestellung als Teil des piCLASSIC-Codes ist das Gerät bereits eingebaut. Wird das Gerät als Aufrüstset für piCLASSIC/Classic bestellt, hat der Einbau entsprechend der oben stehenden Abbildung zu erfolgen.

A*) Wechseln Sie die Position von Stopfen A von oben nach unten, wenn eine Fernmessung für die piCLASSIC-Pumpe gewünscht wird.

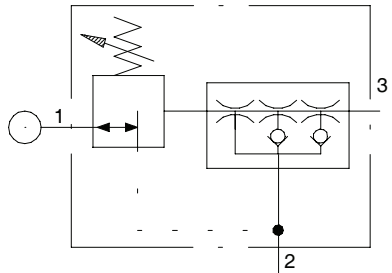
B**) Verwenden Sie Stopfen B für die Fernmessung der Classic-Pumpe.

EINSTELLUNG DES UNTERDRUCKBEREICHES

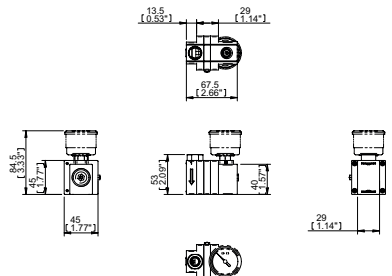


Unterdruck -kPa [-inHg]	
30 bis 45 [9–13.5 -inHg]	Keine Unterlegscheibe
45 bis 60 [13.5–18 -inHg]	Unterlegscheibe

PNEUMATIKSCHEMA

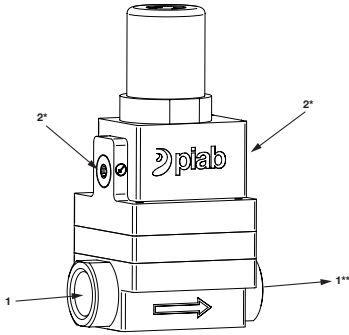


ABMESSUNGEN



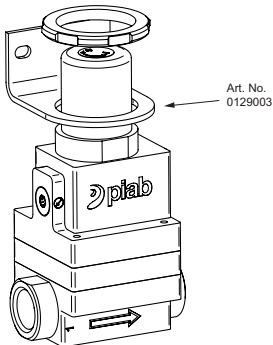
Freistehende Ausführung

ÜBERBLICK



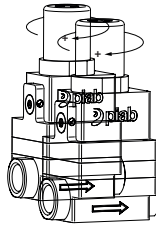
1	Druckluft	Schwenkbare Anschlüsse
1**	Druckluft	Geregelter Förderdruck
2*	Vakuummessung 1	Geeignete Stelle für Unterdruckmessgerät
2*	Vakuummessung 2	Fernmessung des Unterdruckes. Abstand zum Unterdrucksystem darf maximal 3m [10 ft] betragen.

EINBAU



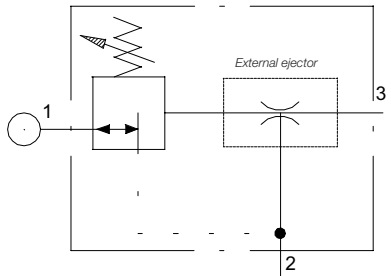
Der oben im Bild aufgeführte Befestigungswinkel ist als Zubehör erhältlich.

EINSTELLUNG DES UNTERDRUCKBEREICHES

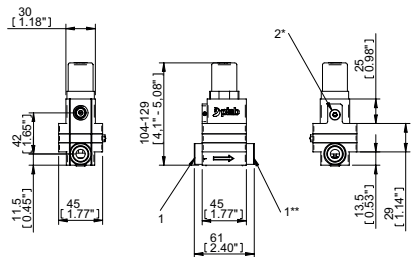


Unterdruck -kPa [-inHg]
25 bis 70 [7.5-21 -inHg]

PNEUMATIKSCHEMA



ABMESSUNGEN



TECHNICAL DATA

Max. Förderdruck	0,7 [101.5]	MPa [psi]
Min. Förderdruck	0,4 [58]	MPa [psi]
Druckabfall (Förderdruck)	0,05 (bei 0,7 MPa und 15 NI/s) [7.25 (bei 101.5 psi und 31.8 scfm)]	MPa [psi]
Werkstoff	Al, CuZn, HNBR, NBR, SS, PA66	-
Temperaturbereich	-10 bis +60 [14 bis 140]	°C [°F]
Gewicht	324 (268*) [11.4 (9.45*)]	g [oz]
Betriebsbereich	25 bis 70 (30 bis 60)* [7.5 bis 21 (9 bis 18)*]	-kPa [-inHg]
Genauigkeit	±3 [±0.89]	kPa [inHg]
Min. Durchfluss	1,67 [3.54] bei empfohlenem Speisedruck	NI/s [scfm]
Max. Durchfluss	15 [31.8]	NI/s [scfm]
Lebensdauer	5 (5 Millionen)	Jahre (Zyklen)
Minimale Partikelgröße	5	µm
Max. Abstand zum Unterdrucksystem**	3 [10]	m [ft]

*) piCLASSIC/Classic integrierte Ausführung.

***) Unterdruckmessschlauch.

BESTELLBEZEICHNUNG

Beschreibung	Art. Nr.
piSAVE™ optimize stand-alone 25-70 -kPa G3/8"	0128999
piSAVE™ optimize stand-alone 25-70 -kPa 3/8" NPT	0129000
piSAVE™ optimize upgrade kit piCLASSIC/Classic	0129002

SICHERHEITSVORKEHRUNGEN

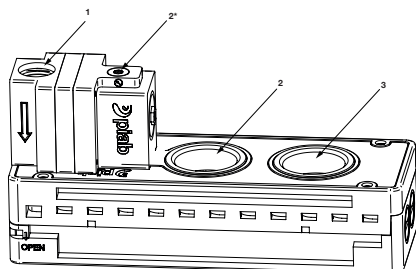
Ein verantwortungsloser Umgang mit der zugeführten Luft kann Verletzungen verursachen; die zugeführte Luft darf zu keinem Zeitpunkt für andere als die vorgesehenen Zwecke eingesetzt werden. Denken Sie immer daran, die Luftzufuhr bei Reinigungs- oder Wartungsarbeiten abzuschalten.

GEWÄHRLEISTUNG

Piab übernimmt eine Gewährleistung von 1 Jahren auf piSAVE™ optimize.

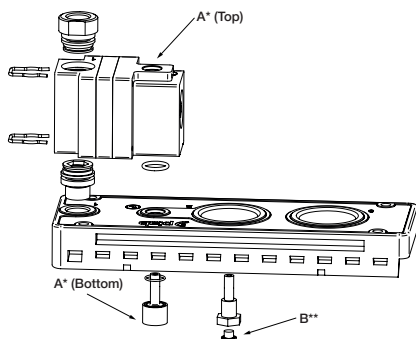
Version intégrée pour piCLASSIC/Classic

APERÇU



1	Air comprimé	Raccords tournants. Raccords instantanés ou filetés
2	Vide	Raccord de vide principal
3	Échappement	Permet de visser un silencieux
2*	Détection du vide	Emplacement pour un vacuomètre ou un capteur de vide

MONTAGE

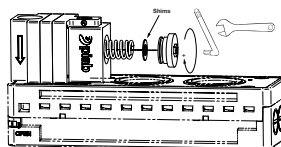


Le régulateur est livré monté d'office lorsqu'il est commandé avec le code de configuration de la piCLASSIC. En seconde monte sur une pompe piCLASSIC/Classic existante, suivez les instructions du schéma ci-dessus.

A*) Modifiez la position de la fiche A du haut vers le bas pour une détection déportée avec une pompe piCLASSIC.

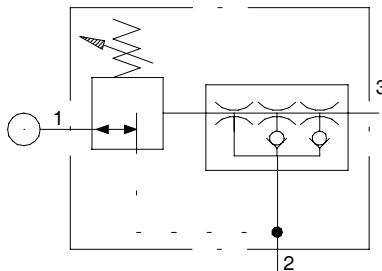
B**) Utilisez la fiche B pour une détection déportée avec une pompe Classic.

RÉGLAGE

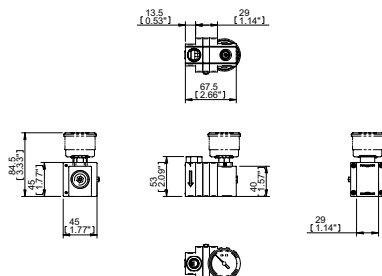


Niveau de vide -kPa	
30-45 [9-13.5 -inHg]	Sans cale
45-60 [13.5 - 18 -inHg]	Cale

SCHÉMA PNEUMATIQUE

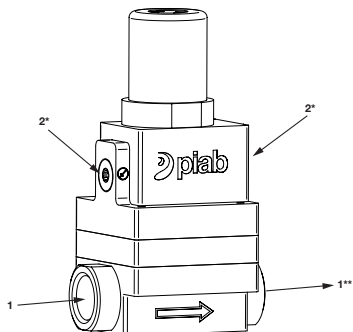


DIMENSIONS



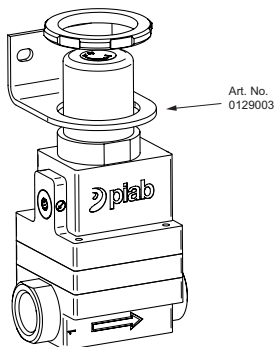
Version seule

APERÇU



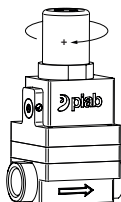
1	Air comprimé	Raccords tournants
1**	Air comprimé	Pression d'alimentation régulée
2*	Détection du vide 1	Emplacement pour un vacuomètre
2*	Détection du vide 2	Un capteur de vide. Éviter des distances au système de vide de plus de 3 m [10 ft]

MONTAGE



L'équerre de montage dans le schéma ci-dessus est proposée comme accessoire.

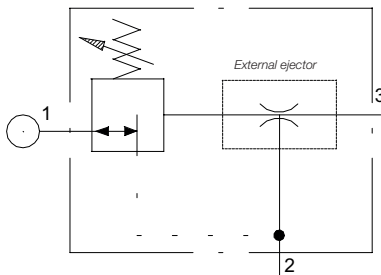
RÉGLAGE



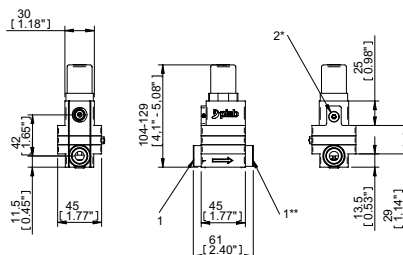
Niveau de vide -kPa

25-70 [7.5-21 -inHg]

SCHÉMA PNEUMATIQUE



DIMENSIONS



TECHNICAL DATA

Pression d'alimentation max.	0,7 [101.5]	MPa [psi]
Pression d'alimentation min.	0,4 [58]	MPa [psi]
Chute de pression (Pression d'alimentation)	0,05 (à 0,7 MPa et 15 NI/s) [7.25 (à 101.5 psi et 31.8 scfm)]	MPa [psi]
Matériaux	Al, CuZn, HNBR, NBR, SS, PA66	-
Plage de températures	-10 à +60 [14-140]	°C [°F]
Masse	324 (268)* [11.4 (9.45)*]	g [oz]
Plage d'utilisation	25-70 (30-60)* [7.5-21 (9-18)*]	-kPa [-inHg]
Précision	±3 [0.89]	kPa [inHg]
Débit min.	1,67 [3.54] à la pression d'alimentation recommandée de l'éjecteur/la pompe.	NI/s [scfm]
Débit max.	15 [31.8]	NI/s [scfm]
Durée de vie	5 (5 millions)	années (cycles)
Granulométrie min.	5	µm
Distance max. au système de vide**	3 [10]	m [ft]

*) Version intégrée sur piCLASSIC/Classic.

***) Tuyau pour détecteur de vide.

CHOIX DE RÉFÉRENCES

Description	Réf.
piSAVE™ optimize stand-alone 25-70 -kPa G3/8"	0128999
piSAVE™ optimize stand-alone 25-70 -kPa 3/8" NPT	0129000
piSAVE™ optimize upgrade kit piCLASSIC/Classic	0129002

PRÉCAUTIONS DE SÉCURITÉ

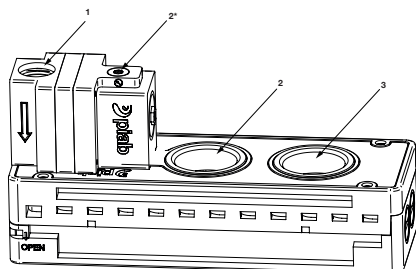
Une utilisation sans précaution de l'air comprimé peut provoquer de graves blessures. L'air comprimé ne doit jamais être utilisé à d'autres fins que celles pour lesquelles il est prévu. Veuillez tout particulièrement à bien fermer l'alimentation de l'air comprimé avant toute intervention de maintenance ou de nettoyage.

GARANTIE

Piab fournit une garantie de 1 ans sur le piSAVE™ optimize.

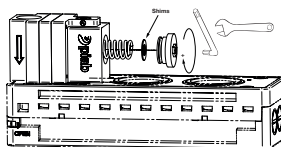
Versão integrada em bomba Classic ou piCLASSIC

VISÃO GERAL



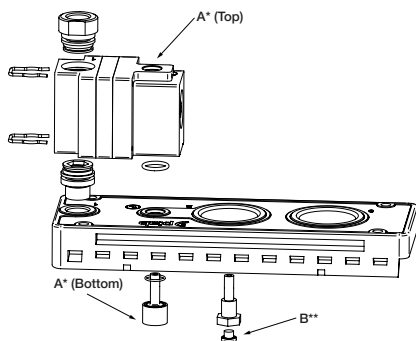
1	ar comprimido	Conexões giratórias. Conexões Push-in ou rosca
2	vácuo	conexão principal de vácuo
3	exaustão	para uso com silenciadores
2*	sensor de vácuo	para conectar um vacuômetro ou sensor de vácuo

AJUSTE DA FAIXA DE VÁCUO



Nível de vácuo em kPa (inHg)	
-30 a -45 [-9 a -13.5]	sem calço
-45 a -60 [-13.5 a -18]	com calço

MONTAGEM

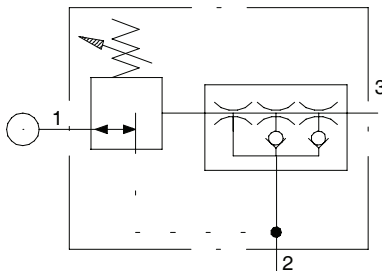


Já montada quando solicitada como parte do código da bomba piCLASSIC. Quando adquirida como um kit de atualização para Classic ou piCLASSIC, montar de acordo com a figura acima.

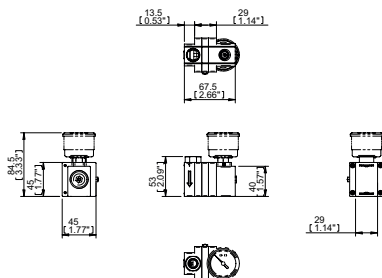
A*) Mudar a posição do plug A do topo para a base para instalação em bomba piCLASSIC.

B*) Utilizar o plug B para instalação em bomba Classic.

DIAGRAMA PNEUMÁTICO

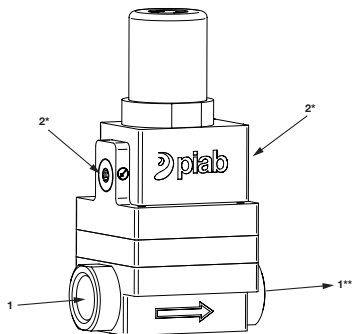


DIMENSÕES



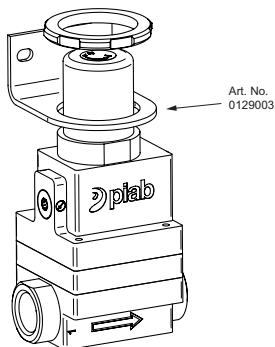
Versão padrão

VISÃO GERAL



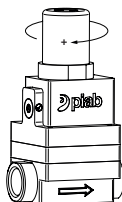
1	ar comprimido	conexões giratórias
1**	ar comprimido	pressão de alimentação de ar comprimido regulada
2*	sensor de vácuo 1	para instalação de um vacu-ômetro
2*	sensor de vácuo 2	Sensor de vácuo. Evitar distâncias até o sistema de vácuo maiores de 3m [10 ft]

MONTAGEM



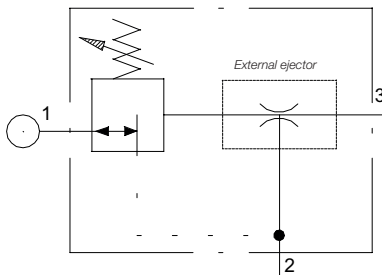
A abraçadeira suporte, conforme figura acima, está disponível como um acessório.

AJUSTE DA FAIXA DE VÁCUO

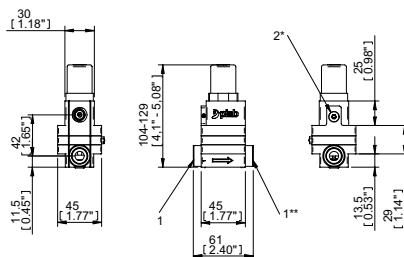


Nível de vácuo kPa (inHg)
-25 a -70 [-7.5 a -14]

DIAGRAMA PNEUMÁTICO



DIMENSÕES



DADOS TÉCNICOS

Pressão de alimentação máximo	0,7 [101.5]	MPa [psi]
Pressão de alimentação mínimo	0,4 [58]	MPa [psi]
Queda de pressão (Pressão de alimentação)	0,05 (a 0,7Mpa e 15NI/s) [7,5 (a 101,5 psi e 31,8 scfm)]	MPa [psi]
Material	Al, CuZn, HNBR, NBR, Aço inox, PA66	-
Faixa de temperatura	de -10 a 60 [de 14 a 140]	°C [°F]
Peso	324 (268)* [11,4 (9,45)*]	g [oz]
Faixa de operação	de 25 a 70 (de 30 a 60)* [7.5-21 (9-18)*]	-kPa [-inHg]
Precisão	±3 [0,89]	kPa [inHg]
Fluxo mínimo	1,67 [3,54] @ recomendada ejetor/bomba pressão de alimentação	NI/s [scfm]
Fluxo máxima	15 [31,8]	NI/s [scfm]
Vida útil	5 (5 milhões)	anos (ciclos)
Tamanho de partícula mínimo	5	µm
Distância máxima do sistema de vácuo **	3 [10]	m [ft]

*) Versão integrada em bomba Classic ou piCLASSIC

**) Comprimento do tubo de monitoramento do nível de vácuo.

COMO FAZER UM PEDIDO

Descrição	Código
piSAVE™ optimize stand-alone 25-70 -kPa G3/8"	0128999
piSAVE™ optimize stand-alone 25-70 -kPa 3/8" NPT	0129000
piSAVE™ optimize upgrade kit piCLASSIC/Classic	0129002

PRECAUÇÕES DE SEGURANÇA

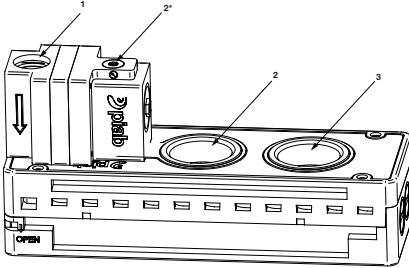
O uso irresponsável do ar comprimido pode causar acidentes. O ar comprimido nunca deve ser utilizado para algo além do propósito para ele designado. Lembre-se sempre de desligar o ar comprimido para limpeza ou manutenção.

GARANTIA

A Piab garante o piSAVE™ optimize por 1 anos.

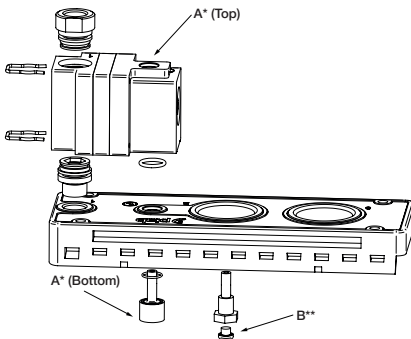
Wersja zintegrowana dla piCLASSIC/Classic

PRZEGLĄD



1	Sprężone powietrze	Złącza obrotowe. Złącza wtykowe lub gwintowane
2	Podciśnienie	Główne złącze podciśnienia
3	Wylot	Przystosowany do tłumików
2*	Detekcja podciśnienia	Odpowiednie miejsce dla wakuometru lub zdalnego czujnika podciśnienia

MONTAŻ

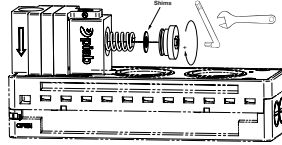


Zamontowana w przypadku zamówienia jako część kodu piCLASSIC. W przypadku zamówienia jako zestaw unowocześniający dla piCLASSIC/Classic, zamontować zgodnie z powyższym rysunkiem.

A*) Zmienić pozycję wkładki A z górnej na dolną dla detekcji zdalnej za pomocą pompy piCLASSIC.

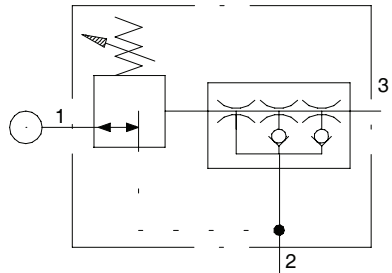
B**) Użyć wkładki B do detekcji zdalnej za pomocą pompy Classic.

USTAW ZAKRES POZIOMU PODCIŚNIENIA

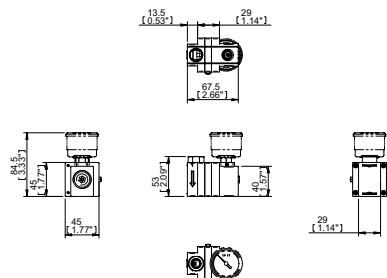


Poziom podciśnienia –kPa [-inHg]	
30-45 [9-13.5]	Brak podkładki
45-60 [13.5-18]	Podkładka

SCHEMAT PNEUMATYCZNY

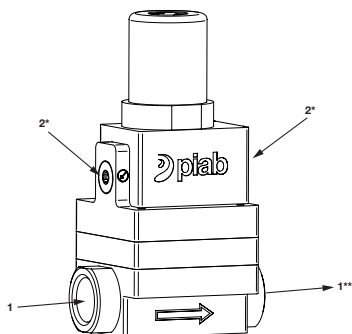


WYMIARY



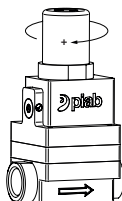
Wersja samodzielna

PRZEGLĄD



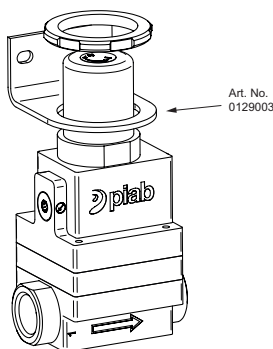
1	Sprężone powietrze	Złącza obrotowe
1**	Sprężone powietrze	Regulowane ciśnienie zasilania
2*	Detekcja podciśnienia 1	Odpowiednie miejsce dla wakuometru
2*	Detekcja podciśnienia 2	Zdalnego czujnika podciśnienia. Unikać odległości od układu podciśnienia większej niż 3 metry [10 ft].

USTAW ZAKRES POZIOMU PODCIŚNIENIA



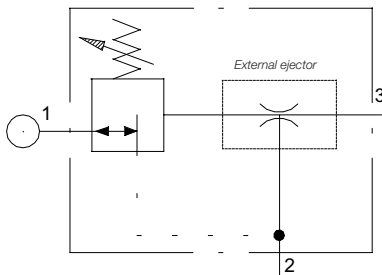
Poziom podciśnienia -kPa [-inHg]
25-70 [7.5-21]

MONTAŻ

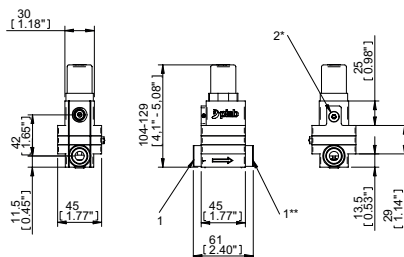


Uchwyty montażowe pokazane na powyższym rysunku dostępne są jako akcesoria.

SCHEMAT PNEUMATYCZNY



WYMIARY



DANE TECHNICZNE

Maks. ciśnienie zasilania	0,7 [101.5]	MPa [psi]
Min. ciśnienie zasilania	0,4 [58]	MPa [psi]
Spadek ciśnienia (Ciśnienie zasilania)	0,05 (@ 0,7 MPa i 15 NI/s) [7.25 (@ 101.5 psi i 31.8 scfm)]	MPa [psi]
Materiał	Al, CuZn, HNBR, NBR, SS, PA66	-
Zakres temperatur	-10-60 [14-140]	°C [°F]
Ciężar	324 (268)* [11.4 (9.45)*]	g [oz]
Zakres pracy	25-70 (30-60)* [7.5-21 (9-18)*]	-kPa [-inHg]
Dokładność	±3 [0.89]	kPa [inHg]
Min. przepływ	1.67 [3.54] dla zaleczonego eżektora/pompy ciśnienia zasilania	NI/s [scfm]
Maks. Przepływ	15 [31.8]	NI/s [scfm]
Żywotność	5 (5 milionów)	lat (cykli)
Min wielkość cząsteczek	5	µm
Max odległość od systemu podciśnieniowego**	3 [10]	m [ft]

*) piCLASSIC/Classic wersja zintegrowana.

***) Wąż detekcji podciśnienia

DANE DO ZAMÓWIENIA

Opis	Art. Nr.
piSAVE™ optimize stand-alone 25-70 -kPa G3/8"	0128999
piSAVE™ optimize stand-alone 25-70 -kPa 3/8" NPT	0129000
piSAVE™ optimize upgrade kit piCLASSIC/Classic	0129002

ŚRODKI BEZPIECZEŃSTWA

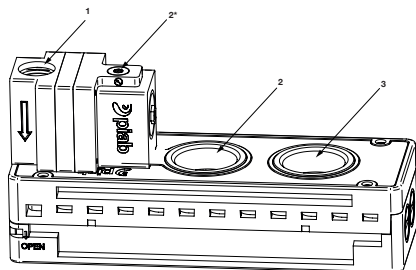
Nieodpowiedzialne użytkowanie powietrza zasilającego może spowodować obrażenia, nie wolno stosować powietrza zasilającego do celów innych, niż zgodnych z przeznaczeniem. Podczas czyszczenia lub serwisowania należy pamiętać, aby zawsze odłączyć zasilanie.

GWARANCJA

Firma Piab udziela 1-letniej gwarancji na urządzenie piSAVE™ optimize.

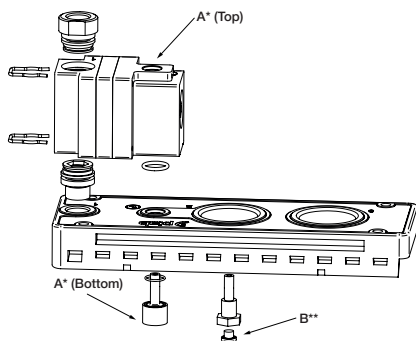
Integrerad version för piCLASSIC/Classic

ÖVERSIKT



1	Tryckluft	Svivande anslutningar. Push-in eller gängad anslutning
2	Vakuüm	Vakuümanslutning
3	Utblås	Passande för ljuddämpare
2*	Vakuümport	Passande plats för vakuümmätare eller fjärravkänning

MONTERING

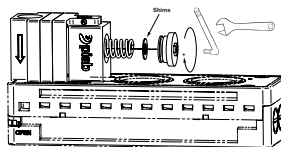


Redan monterad som en del av piCLASSIC-kod. När det beställs som ett uppgraderingskit för piCLASSIC/Classic, monteras den enligt bilden ovan.

A*) Ändra position av plugg A från toppen till botten för avkänning med piCLASSIC-pump.

B**) Använd plugg B för fjärravkänning med Classic-pump.

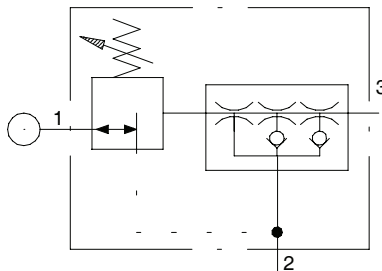
STÄLL IN VAKUÜMNIVÅN



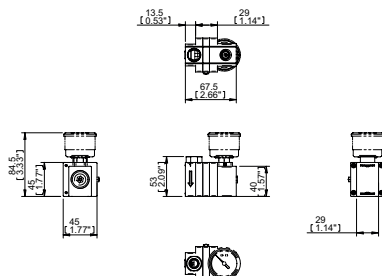
Vakuümmivå -kPa [-inHg]

30-45 [9-13.5]	Ingen distansbricka
45-60 [13.5-18]	Distansbricka

PNEUMATISKT DIAGRAM

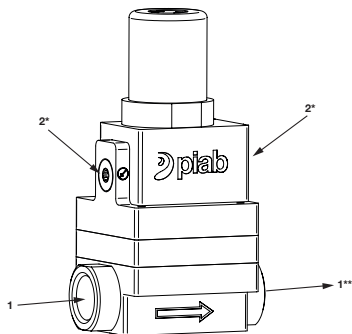


DIMENSIONER



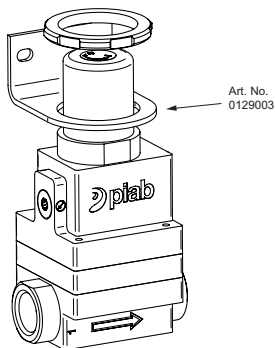
Fristående version

ÖVERSIKT



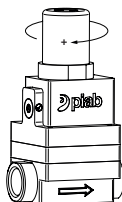
1	Tryckluft	Svivlande anslutningar
1**	Tryckluft	Reglerat matartryck
2*	Vakuuavkänning 1	Passande plats för vakuummätare
2*	Vakuuavkänning 2	Fjärravkänning. Undvik avstånd till vakuumsystem längre än 3m [10 ft].

MONTERING



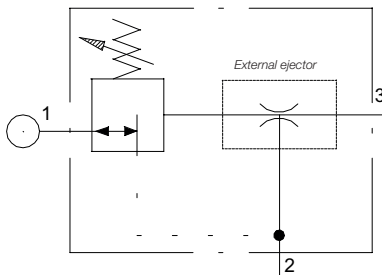
Monteringsfäste enligt bilden ovan finns som tillbehör.

STÄLL IN VAKUUMNIVÅN

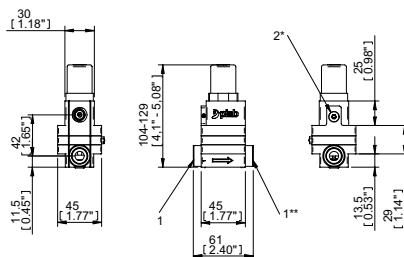


Vakuumnivå -kPa [-inHg]
25-70 [7.5-21]

PNEUMATISKT DIAGRAM



DIMENSIONER



TEKNISK DATA

Drivtryck (max.)	0,7 [101.5]	MPa [psi]
Drivtryck (min.)	0,4 [58]	MPa [psi]
Tryckfall (Drivtryck)	0,05 (vid 0,7 MPa och 15 NI/s) [7.25 (vid 101.5 psi och 31.8 scfm)]	MPa [psi]
Material	Al, CuZn, HNBR, NBR, SS, PA66	-
Temperaturområde	-10-60 [14-140]	°C [°F]
Vikt	324 (268)* [11.4 (9.45)*]	g [oz]
Driftområde	25-70 (30-60)* [7.5-21 (9-18)*]	[-inHg]
Noggrannhet	±3 [0.89]	kPa [inHg]
Min. Flöde, nominellt	1,67 [3.54] @ år rekommenderat matartryck till ejektorn / vakuumpumpen	NI/s [scfm]
Max. Flöde, nominellt	15 [31.8]	NI/s [scfm]
Livslängd, mekaniskt	5 (5 miljoner)	År (cykler)
Min. partikelstorlek	5	µm
Max avstånd till vakuumsystem**	3 [10]	m [ft]

*) piCLASSIC/Classic integrerad version.

**) Vakuumavkänning.

BESTÄLLNINGSPÅSÄTTNING

Beskrivning	Art. nr.
pi piSAVE™ optimize stand-alone 25-70 -kPa G3/8"	0128999
piSAVE™ optimize stand-alone 25-70 -kPa 3/8" NPT	0129000
piSAVE™ optimize upgrade kit piCLASSIC/Classic	0129002

SÄKERHETSÅTGÄRDER

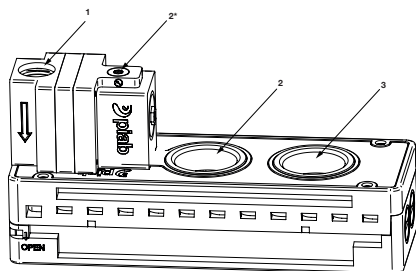
Oansvarigt användande av matarluft kan orsaka skador, matarluft får aldrig användas för något annat än avsedd användning. Kom ihåg att alltid stänga av luften vid rengöring eller underhåll.

GARANTI

Piab tillhandahåller 1-års garanti för piSAVE™ optimize.

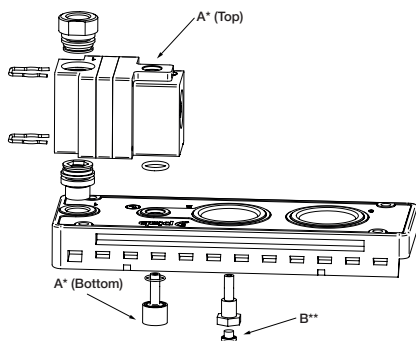
Versione integrata per piCLASSIC/Classic

PANORAMICA



1	Aria compressa	Raccordi girevoli, rapidi o connessione filettata
2	Vuoto	Connessione vuoto principale
3	Scarico	Consigliata per il silenziatore
2*	Letture vuoto	Consigliata per vacuometro o per vacuostato

MONTAGGIO

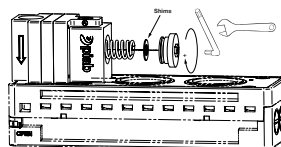


Fornita già montata quando ordinata come parte del codice piLASSIC. Quando ordinata come aggiornamento per piCLASSIC/Classic, montarla come in figura.

A*) Invertire la posizione del tappo A dall'alto al basso per funzionamento con pompe piCLASSIC.

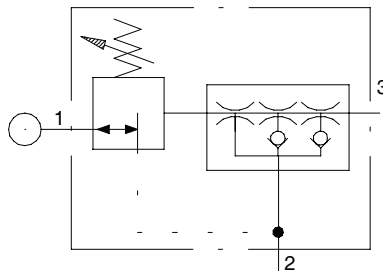
B**) Usare il tappo B per pompe Classic.

REGOLARE IL LIVELLO DI VUOTO

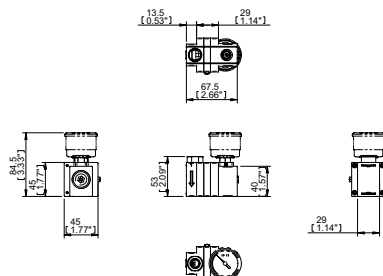


Livello di vuoto -kPa [-inhg]	
30-45 [9-13.5]	No shim
45-60 [13.5-18]	Shim

SCHEMA PNEUMATICO

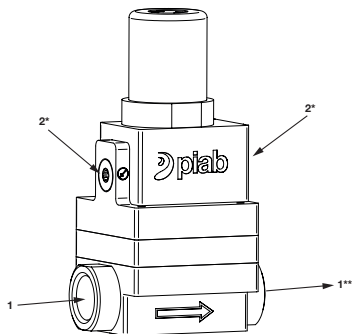


DIMENSIONI



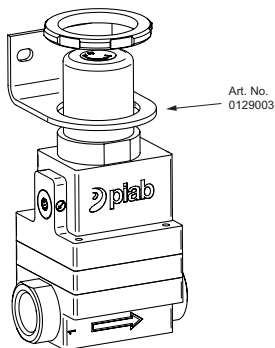
Stand-alone

PANORAMICA



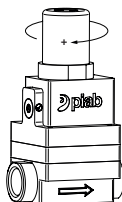
1	Aria compressa	Raccordo girevole
1**	Aria compressa	Pressione regolata
2*	Porta lettura vuoto 1	Indicata per vacuometro
2*	Porta lettura vuoto 2	Letture vuoto. Evitare distanze dal circuito del vuoto superiori a 3m [10 ft].

MONTAGGIO



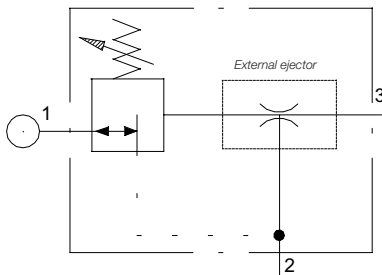
La staffa di montaggio mostrata in figura è disponibile come accessorio.

REGOLARE IL LIVELLO DI VUOTO

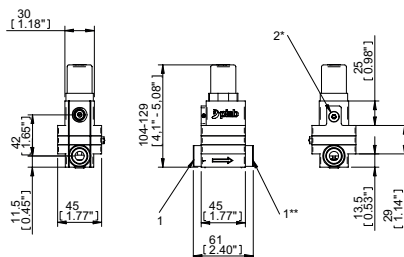


Livello di vuoto -kPa [-inhg]
25-70 [7.5-21]

SCHEMA PNEUMATICO



DIMENSIONI



CARATTERISTICHE TECNICHE

Pressione di alimentazione (max.)	0,7 [101.5]	MPa [psi]
Pressione di alimentazione (min.)	0,4 [58]	MPa [psi]
Caduta di pressione (alimentazione)	0,05 (@ 0,7 MPa & 15 NI/s) [7.25 (@ 101.5 psi & 31.8 scfm)]	MPa [psi]
Materiali	Al, CuZn, HNBR, NBR, SS, PA66	-
Temperatura di lavoro	-10-60 [14-140]	°C [°F]
Peso	324 (268)* [11.4 (9.45)*]	g [oz]
Range vuoto operativo	25-70 (30-60)* [7.5-21 (9-18)*]	[-inHg]
Accuratezza	±3 [0.89]	kPa [inHg]
Portata (min.)	1,67 [3.54] @ pressione di alimentazione raccomandata della pompa	NI/s [scfm]
Portata (max.)	15 [31.8]	NI/s [scfm]
Vita utile	5 (5 milioni)	Anni (cicli)
Dimensione minima particelle (min.)	5	µm
Distanza (max.) dal circuito del vuoto**	3 [10]	m [ft]

*) Versione integrate per piCLASSIC/Classic.

**) Tubazione lettura vuoto.

CODICI IDENTIFICATIVI

Descrizione	Art. nr.
piSAVE™ optimize stand-alone 25-70 -kPa G3/8"	0128999
piSAVE™ optimize stand-alone 25-70 -kPa 3/8" NPT	0129000
piSAVE™ optimize kit di aggiornamento piCLASSIC/Classic	0129002

PRACAUZIONI PER LA SICUREZZA

L'uso scorretto dell'aria compressa può causare infortuni; la tubazione dell'aria deve essere usata soltanto ed esclusivamente per gli scopi previsti. Ricordarsi chiudere l'aria durante la pulizia o la manutenzione.

GARANZIA

Piab fornisce una garanzia di 1 anno per il piSAVE™ optimize.

AMERICAS

ARGENTINA

Piab Argentina S.A.
25 de Mayo 1807
San Martin
AR-1650 BUENOS AIRES
Phone: +54 11 4713 8550
Fax: +54 11 4713 8552
Email: info-argentina@piab.com

BRAZIL

Regional office South America
Piab do Brasil Ltda.
R. Capitão Joaquina da Silva Rocha, 50
Jardim Ana Maria
BR-13208-750 JUNDIAI – SP
Phone: +55 11 4492 9050
Fax: +55 11 4522 4066
Email: info-brasil@piab.com

MEXICO

Piab Mexico & Central América
65 Sharp Street
HINGHAM MA 02043 US
Phone: +1 781 337 7309
Fax: +1 781 337 6864
Email: info-mxca@piab.com

USA/CANADA

Regional office North America
Piab USA, Inc.
65 Sharp Street
HINGHAM MA 02043 US
Phone: +1 781 337 7309
Fax: +1 781 337 6864
Email: info-usa@piab.com

ASIA

CHINA

Piab (Shanghai) Co., Ltd
Unit 401, Blk B1, No. 6000 Shenzhuan Rd
Songjiang District
CN-201619 SHANGHAI
Phone: +86 21 5237 6545
Fax: +86 21 5237 6549
Email: info-china@piab.com

INDIA

Piab Vacuum Technology Pvt. Ltd
Plot no 11/C8, 11th block,
Mugappair East,
IN-600 037 CHENNAI
Phone: +91 9444 25 36 48
Email: info-india@piab.com

JAPAN

Piab Japan Ltd.
8-43-17 Tateishi Katsushika-ku,
JP-124-0012 TOKYO
Phone: +81 3 6662 8118
Fax: +81 3 6662 8128
Email: info-japan@piab.com

SINGAPORE

Regional office Asia Pacific
Piab Asia Pte Ltd
4008 Ang Mo Kio Ave 10
03-16 Techplace 1
SG-569625 SINGAPORE
Phone: +65 6455 7006
Fax: +65 6455 0081
Email: info-singapore@piab.com

SOUTH KOREA

Piab Korea Ltd
C-2402 Daelim Acrotel
KR-Kangnam-Gu 467-6
DOKOK-DONG
Phone: +82 2 3463 0751
Fax: +82 2 3463 0754
Email: info-korea@piab.com

EUROPE

FRANCE

Piab
Parc d'entreprises L'Esplanade
10 rue Enrico Fermi
Saint-Thibault des Vignes
FR-77462 LAGNY SUR MARNE Cedex
Phone: +33 1 6430 8267
Fax: +33 1 6430 8285
Email: info-france@piab.com

GERMANY

Regional office Europe
Piab Vakuum GmbH
Otto-Hahn-Str. 14
DE-35510 BUTZBACH
Phone: +49 6033 7960 – 0
Fax: +49 6033 7960 – 199
Email: info-germany@piab.com

ITALY

Piab ITALIA Srl
Via Cuniberti, 58
IT-10151 TORINO
Phone: +39 011 226 36 66
Fax: +39 011 226 21 11
Email: info-italy@piab.com

POLAND

Piab Polska Sp. z o.o.
Ul. Astronomow 1
PL-80-299 GDANSK
Phone: +48 58 785 08 50
Fax: +48 58 785 08 51
Email: info-poland@piab.com

SPAIN

Vacío Piab, S.L.
Avda. Pineda, 2
CASTELDEFELS
ES-08860 BARCELONA
Phone: +34 93 6333876
Fax: +34 93 6380848
Email: info-spain@piab.com

SWEDEN

Head office
Piab AB
Box 4501
SE-183 04 TÄBY
Phone: +46 8 630 25 00
Fax: +46 8 630 26 90
Email: info-sweden@piab.com

UNITED KINGDOM

Piab Ltd.
Unit 7 Oaks Industrial Estate
Festival Drive
LOUGHBOROUGH LE11 5XN
Phone: +44 1509 857 010
Fax: +44 1509 857 011
Email: info-uk@piab.com

No need to compromise

www.piab.com