

Pneumatic Sensor Fittings



The sensor produce a pneumatic or electric output signal when the pressure drop in the exhaust chamber of the cylinder goes below their back pressure threshold.

Ø metric:
4 mm

Technical Characteristics

- **Compatible Fluids:** Compressed air
- **Working Pressure:** 3 to 8 bar
- **Working Temperature:** -15°C to +60°C
- **Back Pressure:** 0.85 to 1 bar
- **Switching Time:** Model 7818: 3 ms
- **Open/Closed Contact:** Model 7828: 2A / 0-48 V
2A / 250 V 50 Hz

Advantages

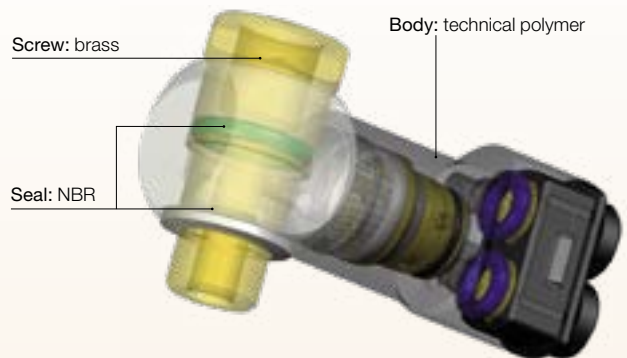
- Detection of end of cylinder rod stroke
- With Pneumatic Output**
Totally pneumatic installation
2 possible installations:
 - Supplied with permanent pressure (P1): produces a pneumatic signal when the back pressure threshold is reached
 - Supplied from the control valve-cylinder circuit on the opposite side: no unexpected pneumatic signal (S) can appear during pressurisation due to the actuating pressure which supplies the sensor fitting (P1)

With Electrical Output

 - Combined electrical and pneumatic installation
 - Installation with continuous electrical supply only (BU)
 - Guarantees an electrical signal when the back pressure threshold is reached

Component Materials

Silicone-free



Regulations

- RoHS
- REACH
- PED

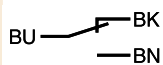
Operation

Pneumatic Installation Diagram



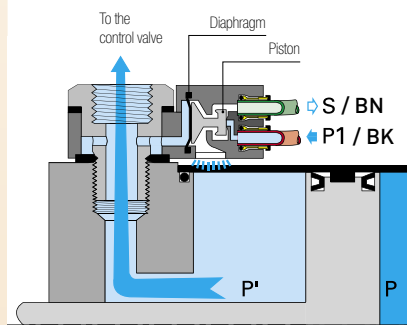
- P': Exhaust back pressure
- P: Dynamic pressure
- P1: Sensor supply pressure
- S: Output signal

Electrical Installation Diagram

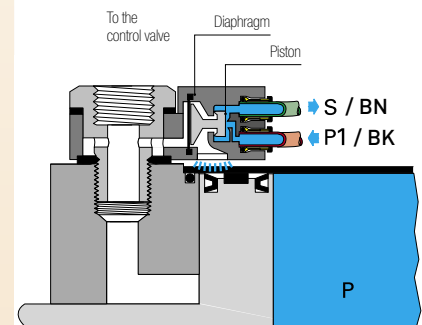


Connection via 3 core 0.5 mm² cable, 2 meters long.
Contactor: 5A / 250 V ~ or 5W / 48V ==

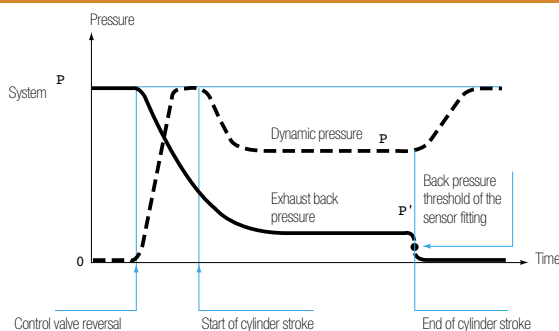
Cylinder in Operation



Cylinder in Final Position

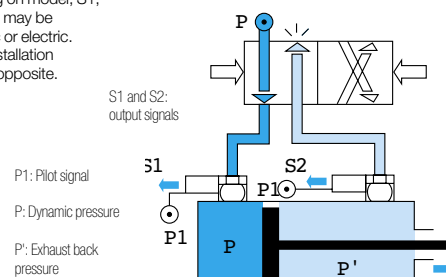


Cylinder Pressure Cycle



Installation Diagram

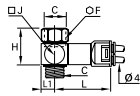
Depending on model, S1, S2 and P1 may be pneumatic or electric. See the installation diagrams opposite.



Pneumatic Sensor Fittings

7818 Pneumatic Sensor Fitting, Male BSPP and Metric Thread

Zamak, NBR, technical polymer, brass

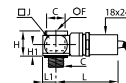


ØD	C		F	H	J	L	L1	Kg
M5x0.8	7818 04 19*		8	16	11	43.5	5.5	0.025
G1/8	7818 04 10		14	23	16	44.5	8	0.043
4	G1/4	7818 04 13	17	28	19.5	46.5	10	0.061
	G3/8	7818 04 17	22	29	23.5	49	12	0.083
	G1/2	7818 04 21	27	30	31.5	52.5	16	0.125

* Bolt zinc passivated steel

7828 Pneumatic/Electric Sensor, Male/Female BSPP and Metric Thread

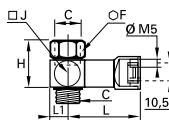
Technical polymer, NBR, brass



C		F	H	H1	J	L	L1	Kg
M5x0.8	7828 00 19	8	20	10	11	49	5.5	0.116
G1/8	7828 00 10	6	20	10	16	52	8	0.132
G1/4	7828 00 13	8	20	10	21	54	10.5	0.142
G3/8	7828 00 17	10	22	12	28	57	14	0.171

7818 Pneumatic Sensor, Male/Female BSPP Thread

Zamak, NBR, technical polymer, brass



C		F	H	J	L	L1	Kg
G1/8	7818 19 10	14	23	16	40.5	8	0.049
G1/4	7818 19 13	17	28	19.5	42.5	10	0.065