

Related Products: Multi-tube Holder **TM Series**

RoHS

- Easy arrangement of tubing
Easy tube insertion and firm fixation
- Possible to separate options depending on number of connection tubes
- Use of flame resistant resin (Equivalent to UL-94 standard V-0)



Applicable Tubing

Tubing material	Nylon, Soft nylon, Polyurethane, other soft plastic tubing
Tubing O.D.	ø4, ø6, ø8, ø10, ø12

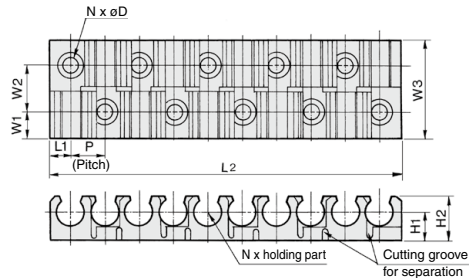
Model

Applicable tubing O.D. (mm)	Model	No. of connecting tubes (Max.)		
		6	8	12
4	TM-04			●
6	TM-06			●
8	TM-08		●	
10	TM-10	●		
12	TM-12	●		

Specifications

Ambient temperature	-20 to 60°C		
Material	Flame resistant polypropylene (Equivalent to UL-94 standard V-0)		
Color	Black		
Accessory	For mounting Cross recessed head countersunk tapping screw (Zinc chromated)		
	Model	Size (Nominal x Length)	No. of tubings
	TM-04	2 x 6	4
	TM-06		
	TM-08		
	TM-10	3 x 8	
TM-12			

Dimensions: Multi-tube Holder



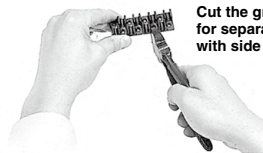
Applicable tubing O.D. (mm)	Model	N (No. of holding parts)	P	L ₁	L ₂	W ₁	W ₂	W ₃	H ₁	H ₂	øD	Mounting screw (Nominal x Length)
4	TM-04	12	6	3.25	72.5	4.5	8	17	5	7.5	2.2	2 x 6
6	TM-06	12	7.5	4.5	91.5	5.5	10	21	6.5	10	2.8	2.6 x 8
8	TM-08	8	9.5	5.5	77.5	6	11	23	7.5	12	2.8	2.6 x 8
10	TM-10	6	12.5	7.5	77.5	6.5	12	25	8.8	14.3	3.2	3 x 8
12	TM-12	6	15	9	93	6.5	12	25	9.8	16.3	3.2	3 x 8

How to Use

⚠ Caution

1. Cut the multi-tube holder depending on number of tubes to be connected.

<Cutting method>



Cut the groove for separation with side cutters.

2. Install the multi-tube holder to the equipment with cross-recessed head, counter-sunk tapping screw.
3. Lay the tube across the gripper and push on the tube.
4. For removing the tubes, pull up the tubes from the gripper.

Related Products: Multi-holder **TMA Series**



- Can be used to secure the KE□ series exhaust valve with One-touch fitting.
- One-touch fitting New KQ2, union tee, elbow, and straight can also be secured.
- Depending on the number of holders required, they can be separated as desired. (Align the cutter with the cutting groove and cut the holder.)



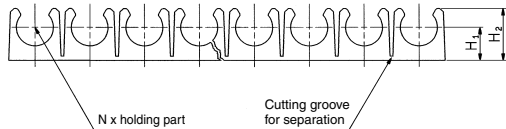
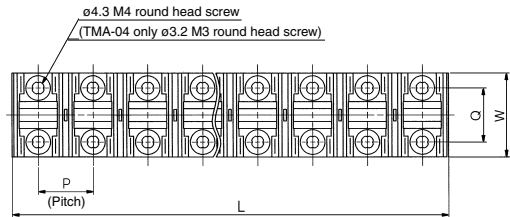
Specifications

Ambient temperature	-20 to 60°C (No freezing)
Material	Flame resistant polypropylene (Equivalent to UL-94 standard V-0)
Color	Black

Model

Model	N (Stations)	Applicable exhaust valve	Applicable One-touch fitting		
			Union tee	Union elbow	Straight union
TMA-04	10	—	KQ2T06-00A	KQ2L06-00A	KQ2H06-00A
TMA-06	8	KEA06	KQ2T08-00A	KQ2L08-00A	KQ2H08-00A
		KEB06			
TMA-08	8	KEA08	KQ2T10-00A	KQ2L10-00A	KQ2H10-00A
		KEB08			
		KEC-02			
TMA-10	6	KEA10	KQ2T12-00A	KQ2L12-00A	KQ2H12-00A
		KEB10			
TMA-12	6	KEA12	—	—	—
		KEB12			
		KEC-03			

Dimensions: Multi-holder



Model	P	L	W	H ₁	H ₂	Q
TMA-04	16.1	160.1	26	10.2	15.5	17.5
TMA-06	19	151	29	11.4	17.9	18.6
TMA-08	21.7	172.5	31.8	12.6	20.3	18.6
TMA-10	25.4	151.2	35	15	24.3	22
TMA-12	28.1	167.3	37	16.2	26.7	22

- KQ2
- KQB2
- KS
- KX
- KM
- KF
- M
- H/DL
- L/LL
- KC
- KK
- KK130
- DM
- KDM
- KB
- KR
- KA
- KQG2
- KG
- KFG2
- MS
- KKA
- KP
- LQ
- MQR
- T
- IDK

Related Products: Tube Cutter

TK Series



Tube Cutter: TK-6
Perpendicular cutting
Air leakage due to cutting failure reduced
Blade is replaceable
Safety lock contained

Note 1) Do not use it to cut the metallic materials such as electric wires.

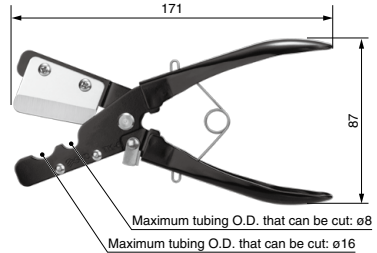
Note 2) Please refrain from touching the blade tip. Failure to do so may result in injury.

When not in use, be sure to use the safety lock. However, the tube cutter may unlock due to impact or catching when putting it in or taking it out of your pocket, so be careful to avoid injury.

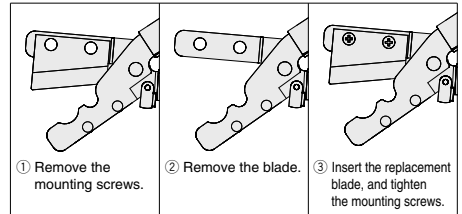
Note 3) The blade can be easily replaced with a Phillips head screwdriver. Please refrain from touching the blade tip during replacement. Failure to do so may result in injury.

Be aware that when loosening the mounting screws, the blade may fall out, causing injury.

Model	TK-6
Applicable tubing material	Nylon, Soft nylon, Polyurethane, and other soft plastic tubing
Maximum tubing O.D. that can be cut	16 mm or less
Weight	130 g
Replacement blade part no.	TK6KAEHA (5 replacement blades + 2 mounting screws)



How to Replace the TK-6 Blade



Tube Cutter: TK-1
Perpendicular cutting
Reduced operating force
Safety lock contained



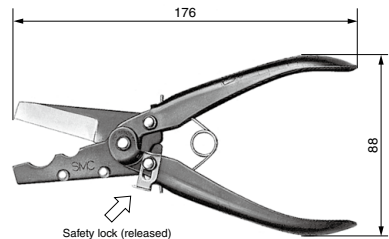
Note 1) Do not use it to cut the metallic materials such as electric wires.

Note 2) Please refrain from touching the blade tip. Failure to do so may result in injury.

When not in use, be sure to use the safety lock. However, the tube cutter may unlock due to impact or catching when putting it in or taking it out of your pocket, so be careful to avoid injury.

Model	TK-1
Applicable tubing material	Nylon, Soft nylon, Polyurethane, and other soft plastic tubing
Applicable tubing O.D.	13 mm or less
Weight	140 g

Tube Cutter: TK-2
Possible to cut a tube up to 18 mm
Safety lock contained



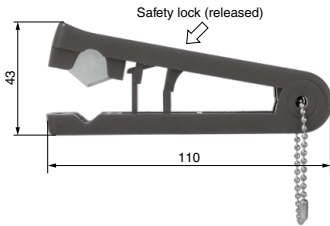
Note 1) Do not use it to cut the metallic materials such as electric wires.

Note 2) Please refrain from touching the blade tip. Failure to do so may result in injury.

When not in use, be sure to use the safety lock. However, the tube cutter may unlock due to impact or catching when putting it in or taking it out of your pocket, so be careful to avoid injury.

Model	TK-2
Applicable tubing material	Nylon, Soft nylon, Polyurethane, and other soft plastic tubing
Applicable tubing O.D.	18 mm or less
Weight	140 g

Tube Cutter: TK-3 (Useful type)
Safety lock contained



Note) Do not use it to cut the metallic materials such as electric wires.

Model	TK-3
Applicable tubing material	Nylon, Soft nylon, Polyurethane, and other soft plastic tubing
Applicable tubing O.D.	12 mm or less
Weight	32 g

Tube Cutter: TK-5

As this product is made of stainless steel it can be used inside clean rooms.

* However, this product is packaged regularly, not in double packaging.

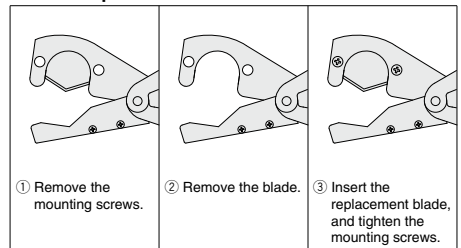
Safety lock contained



Note) The blade can be easily replaced with a Phillips head screwdriver. Please refrain from touching the blade tip during replacement. Failure to do so may result in injury. Be aware that when loosening the mounting screws, the blade may fall out, causing injury.

Model	TK-5
Applicable tubing material	Fluoropolymer, Polyolefin, and other soft plastic tubing
Applicable tubing O.D.	25 mm or less
Weight	100 g
Replacement blade part no.	TK-DPM00132 (5 replacement blades)

How to Replace the TK-5 Blade



KQ2

KQB2

KS
KX

KM

KF

M

H/DL
L/LL

KC

KK

KK130

DM

KDM

KB

KR

KA

KQG2

KG

KFG2

MS

KKA

KP

LQ

MQR

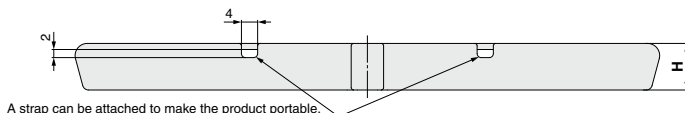
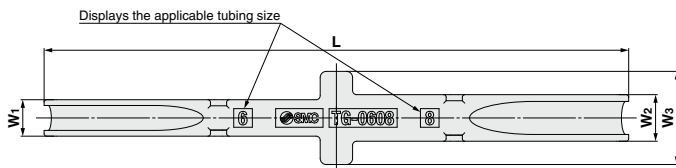
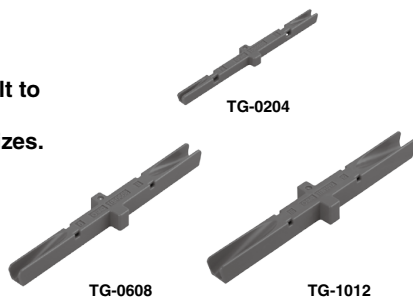
T

IDK

Related Products: Tube Releasing Tool TG-0204/-0608/-1012 Series

- Suitable for use in small spaces where it is difficult to get your hands in.
- One tool is compatible with two different tubing sizes.
- Applicable tubing size: $\varnothing 2$, $\varnothing 4$, $\varnothing 6$, $\varnothing 8$, $\varnothing 10$, $\varnothing 12$

Model	Applicable tubing size	Color	Weight [g]
TG-0204	$\varnothing 2$, $\varnothing 4$	Blue	4
TG-0608	$\varnothing 6$, $\varnothing 8$		11
TG-1012	$\varnothing 10$, $\varnothing 12$		26

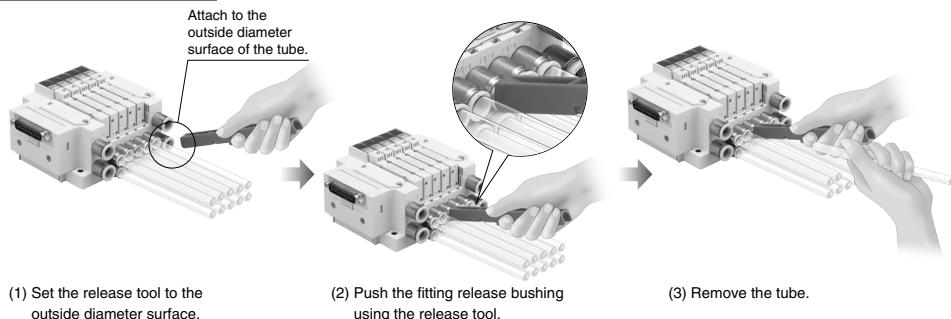


Model	L	W1	W2	W3	H
TG-0204	102.6	5.5	6.5	13	6.5
TG-0608	144.3	9	11.5	23	11.5
TG-1012	186.7	13.6	15.95	31.9	15.95

* The product does not come with a strap.

How to Use

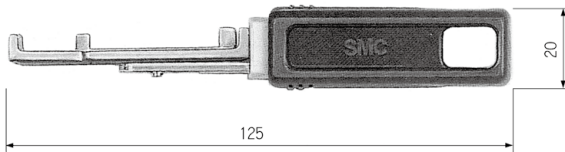
Tube removal procedure



Related Products: Tube Releasing Tool **TG Series**

RoHS

- It is possible to detach the tube from the one-touch fitting one-handed.
- Suitable for use in small spaces where it is difficult to get your hands in.
- One tool is compatible with two different tubing sizes. (Refer to “Size change” below.)



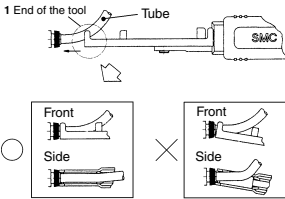
Model	Applicable tubing size		Applicable tubing material	Color	Weight
TG-1	Metric size	ø4, ø6	Nylon, Soft nylon Polyurethane	Blue	33 g
TG-2	Inch size	ø1/8", ø1/4"		Red	

How to Use

⚠ Caution

Process

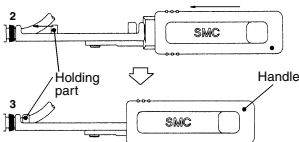
1. Tool edge should be pushed straightforward into the edge of the release button along with the tube in the axial fitting direction.



2. After inserting, grasp the handle tightly and insert the end of the tubing to the stroke end.

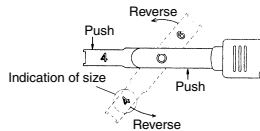
[Note] Insert firmly to the guard against an accidental tube release.

3. After inserting end of tube, relax your grip on the tool. Returning force of spring releases the tube.



Size change

Push both sides at once to release. Reverse and fix at the same position as before. Applicable tube size is indicated on the back side.



KQ2

KQB2

KS
KX

KM

KF

M

H/DL
L/LL

KC

KK

KK130

DM

KDM

KB

KR

KA

KQG2

KG

KFG2

MS

KKA

KP

LQ

MQR

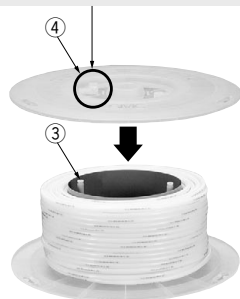
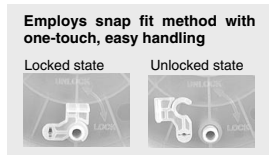
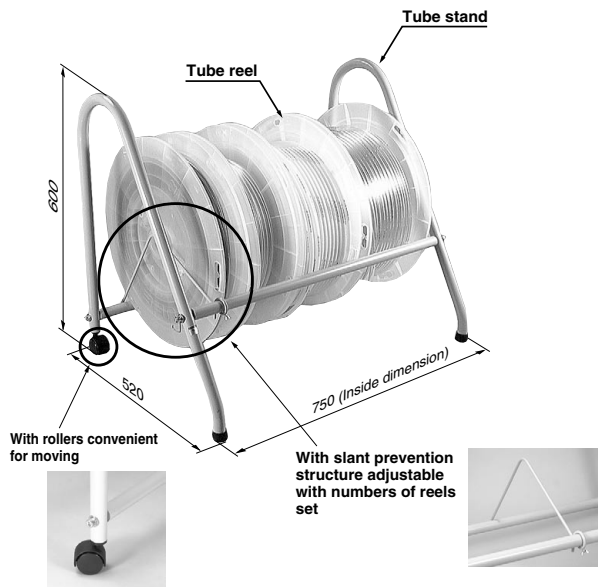
T

IDK

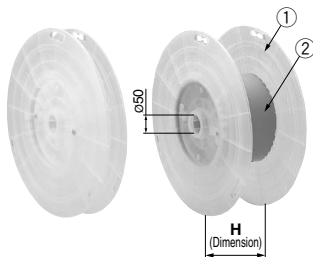
Related Products: Tube Stand & Tube Reel **TB/TBR Series**



- Compact size without taking up space
- Easy installment just by putting tube reel
- Allows easy refilling and replacing tubes.



Tube Reel: TBR-1/2/3/4



Applicable tubing size (mm)	Model	H
4, 6	TBR-1	84
		102 (when branch pipe is used)
8	TBR-2	134
10	TBR-3	184
12	TBR-4	234

Spare Parts

Description	No.	Part no.	Material	Applicable model
Side plate	①	TBR-A167	PP	TBR-1,2,3,4
		TBR-A188		TBR-1
		TBR-A168		TBR-2
Branch pipe	②	TBR-A169	ABS	TBR-3
		TBR-A170		TBR-4
		TBR-A183		TBR-1
		TBR-A184		TBR-2
Fixing rod	③	TBR-A185	ABS	TBR-3
		TBR-A186		TBR-4
		TBR-A187	PP	TBR-1,2,3,4

Tube Stand: TB-2

